



# VILLAGE LODGE WEDDINGS

EXTRAORDINARY EVENTS ON TAHOE'S DONNER SUMMIT

Please contact Weddings & Special Events Manager for further information at 530-426-6769



A PRIVATE TAHOE RESORT,  
ALL YOUR OWN, ON YOUR SPECIAL DAY.  
ONLY AT SUGAR BOWL.

# THE SUGAR BOWL EXPERIENCE

Sugar Bowl Resort, perched high atop Tahoe's Donner Summit, has been a historic Tahoe destination since 1939.

Known for world-class skiing and ample snowfall in the winter, Sugar Bowl is equally well known as a popular and attractive summer spot to host corporate outings, family reunions and of course memorable weddings.

Complete with excellent cuisine and gracious hospitality stemming from a guest-centric staff, Sugar Bowl offers alpine charm and first-rate service for your magical day.

Nestled high in the beautiful Sierra Nevada Mountains near Donner Lake, Truckee and Lake Tahoe, Sugar Bowl's historic Lodge serves up a unique setting where it can be all yours for an unforgettable private wedding.

Sugar Bowl is known worldwide for its picturesque setting, gourmet food, imaginative menus and beautiful presentations. With accommodations for 80 people in the Lodge and more available on-site and nearby, you are sure to host everyone comfortably for your special day

Options are vast and varied for your ceremony and reception. The famous Sun Deck atop Mt. Disney, complete with breathtaking mountain vistas, glorious sunsets and a well-manicured lawn area for you and your guests to bask in the fresh, crisp alpine air, is a perfect choice for an on-mountain outing. For smaller weddings, our Lake Mary provides a unique, secluded private venue for ceremonies or parties.

From the moment you arrive at The Lodge at Sugar Bowl, you are greeted as guests to this amazing resort, and can anticipate the ultimate alpine experience.

At Sugar Bowl, you and your special guests can choose accommodations ranging from slope-side rooms to magnificent lofts, and from newly built condominium units to well-appointed suites with mountain views.

The friendly and experienced staff at Sugar Bowl will work with you to make sure your wedding day is uniquely yours, and utterly unforgettable.

Our onsite Events Manager will provide personalized, detailed and professional service.

Complete with passionate attention to detail ensuring all of your wedding wishes come true.





# THE VILLAGE LODGE

\$17,500<sup>Friday-Sunday</sup>

\$15,000<sup>Sunday -Tuesday or Wednesday - Friday</sup>



Site fee includes EXCLUSIVE use of the Village Lodge from Friday at noon to Sunday at noon.

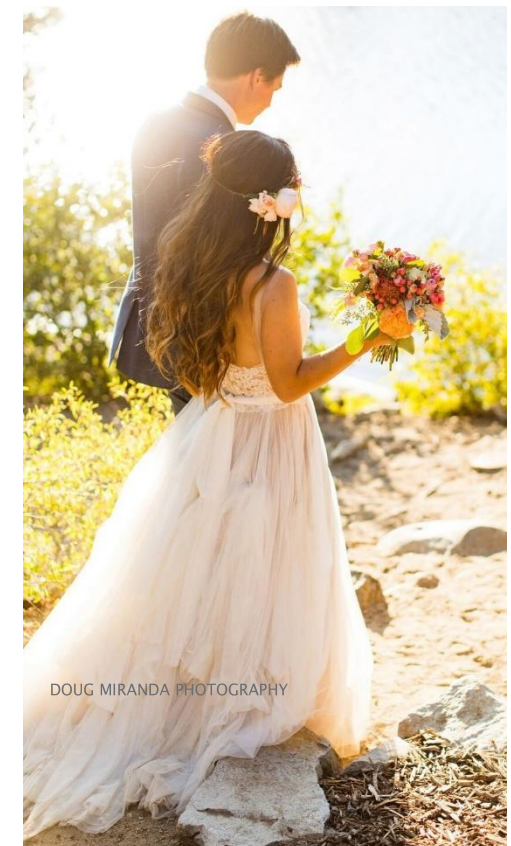
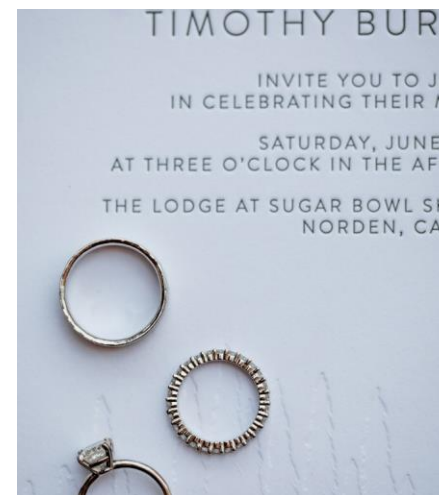
The Village Lodge can accommodate up to 300 guests outdoors.

Please see The Lodge section for other requirements.

Fee includes Items for up to 200 people: Additional items for over 200 will be charged standard rental fees, see rental items section.

- Ceremony Lawn, Belt Room Bar for Welcome Party
- Belt Room Bar for welcome party and after party
- Water, iced tea, and lemonade station for ceremony
- Wedding suite complimentary for the night of wedding when Lodge minimums are met
- Vendor recommendations
- Bar set-up and bartender for a 6-hour time period
- 60" Round Dinner tables
- White folding chair seating
- 6' and 8' tables for guest registration, place card table, gift table, etc
- Full length linens for the Dining tables
- Full length linens for the rectangular tables
- Twinkly Market Lights
- Customized wedding signage directing guests to site(s)
- Market umbrellas and outdoor heaters for dinner seating
- China, glassware, and silverware
- White folding chairs for ceremony
- Cake cutting and passing service
- 15'x15' dance floor (Village location only)
- Bug spray and sunscreen station
- Lounge furniture
- Propane Fire pit and Lawn games
- Guest Fridge to store your weekend snacks
- Limited quantity on blankets and votive candles

Food & Beverage Minimum is based on event dates. Please inquire with Weddings & Special Events Manager for this information.



DOUG MIRANDA PHOTOGRAPHY

# LAKE MARY PLAY DAY

---

\$5,000

With gorgeous views of our private lake and the ability to have fun all day, this is the perfect spot to hold your rehearsal the day before your wedding.

You and your guests will have access to Sugar Bowl's private alpine lake for the duration of the day where you all may choose to relax for the afternoon, go for a paddle on one of our water toys, or simply soak up some rays.

Finish your evening with an intimate rehearsal dinner under the alpenglow. Location can accommodate up to 120 guests for dinner.

Site fee includes use of Lake Mary Cabin from 10am – 10pm, water toys, tables, chairs, etc.

Food & Beverage Minimum is based on event dates. Please inquire with Weddings & Special Events Manager for this information.



# DISNEY LIFT EXPERIENCE

---

\$5,000

Treat your guests to a sky-high cocktail hour with a ride up our famous Disney Express lift to the top of Sugar Bowl.

At the top, your guests will be able to enjoy appetizers and libations while relishing in a once in a lifetime view of Donner Lake, Van Norden Meadow, Sugar Bowl and all of our surrounding landscapes.

This will be sure to create a day that none of your guests will forget.

The Disney Lift Experience can take up to 2.5 hours dependent on the size of your group.





JUST MARRIED

15

KEEP BAR DOWN

PREPARE TO BRACE AS SEAT BAR

CHECK FOR YOUR GEAR AND EQUIPMENT

CAUTION  
MOVING PARTS  
KEEP OFF



# THE LODGE AT SUGAR BOWL WEDDING WEEKEND EXPERIENCE

## **Staying at Sugar Bowl:**

Sugar Bowl Resort transforms into your exclusive mountain retreat. It will be you, nature and your closest friends and family to share with and celebrate your special day.

Indulge yourself and your guests in the seclusion of Donner Summit, located in the beautiful Tahoe National Forest. Sugar Bowl is the perfect place to escape from the hustle and bustle of the city.

The Lodge at Sugar Bowl sleeps up to 80 people in 27 rooms. Our Wedding Suite offers panoramic views of both Mt. Lincoln and Mt. Disney, access to a sundeck, quaint living area and a spacious bathroom with separate dressing facilities. Our guest rooms can accommodate 2-6 people with views of the mountain or gondola.

We are happy to book rooms on a first come first serve basis or the wedding couple may also assign rooms to friends and family (recommended).

We require a final room allocation list received from the wedding couple 30 days before the wedding day. Once rooms are allocated to guests and confirmed these can only be changed or switched before arrival. We request however, that no changes be made 10 days prior to the event.

Changing rooms or switching guests around during registration will result in a \$50.00 turn-over fee per reservation that will be charged at to your guests at check-in time.

The Lodge at Sugar Bowl does not allow pets in its rooms. However; the wedding couple are allowed to bring a dog for their special weekend upon request. A \$100 non-refundable pet deposit will be applied for each pet if they choose to bring them with.

## **Rate:**

\$289.00 per Friday and Saturday nights, double occupancy (first 2 guests)

\$35.00 per extra guest age 13 & up

\$25.00 for kids 6-12. Kids under 5 are free

\$259.00 Monday-Thursday, double occupancy (first 2 guests)

\$35.00 per extra guest age 13 & up

\$25.00 for kids 6-12. Kids under 5 are free Room Minimum

Friday and Saturday: Each weekend wedding is required to book all 20 rooms the night prior and night of the wedding, with a two night minimum stay required. Rooms can be booked for additional nights at mid-week rate upon availability.

Sunday – Thursday: A minimum of 10 rooms, per night is required, with a one night minimum stay required.

## **Check In**

The check-in time for weddings and summer events is 2.00pm. Early check-in is available upon availability.

## **Check Out**

The check-out time is 11.00 a.m. on Sunday. This may be extended for the wedding couple on this day upon availability. Late check-out may be available upon request.

## **Property Rentals**

In addition to Sugar Bowl's 27 rooms at the Lodge, we also offer condos, town-homes and home rentals that can accommodate between 5 – 15 guests depending on the unit size. Some of the units are located within walking distance of 1 to 5 minutes from the lodge. They all are equipped with cable or Direct TV and WIFI for the guests' usage. All our property rentals are pet and smoke free.

A minimum of 2 days of booking is required for all the property rentals and a cleaning fee and 10% tax will be applied to the reservation. All our property rentals are smoke free and pet free. Mid-week and weekend rates may be applied.

For more information and availability about our Property Rental units visit [www.sugarbowl.com](http://www.sugarbowl.com) or by phone at (530)426-6742 or you can send us an email requesting our Property Rentals Catalog at [hotel@sugarbowl.com](mailto:hotel@sugarbowl.com)

# GENERAL POLICIES



## **Sugar Bowl Transportation:**

Sugar Bowl can provide transportation to and from the airport or anywhere around the surrounding area upon request. This service must be booked in advance. We offer small vehicle transportation.

## **Contracts:**

A confirmation letter and event order must be signed upon receipt of deposit. A revised signed event order must accompany all changes. Please read the event order contract carefully. In addition a final completed event order/contract confirming food, beverage, attendance, rentals, set-up and rates must be signed prior to the event. Final payment is due at the conclusion of the event. Business and personal checks are not accepted for final payment. We accept MasterCard, Visa, American Express, Discover, certified funds and cash.

## **Deposits:**

A 25% deposit of site fees and food and beverage minimum will be due at time of contract signing. An additional deposit of \$500 will be required if you add on the Disney chairlift or a rehearsal dinner. Deposits are non-refundable and must be paid in full on day of booking. 5 days prior to your event, 100% of the estimated food cost is due. 15 days prior to event, guaranteed numbers are due. The remaining balance is due at the conclusion of the event.

## **Guarantee:**

The minimum number of people attending the event must be guaranteed 15 days prior to the event. The actual number of attendees may exceed the guaranteed number by 5% if notice of increase is received by Sugar Bowl no fewer than 48 hours before the scheduled event start time. Should the number of attendees exceed 5%, Sugar Bowl has the right to revise the event order/contract as necessary to accommodate the guests. Such revisions may include additional charges per the number of attendees exceeding 5% in accordance with the rates and additional charges set forth on the menu section of this packet. If the actual number of guests falls below the guaranteed count after the 15 day deadline, the guaranteed count must be paid.

## **Food and Beverage:**

Food, liquor, beer, champagne and wine must be purchased from Sugar Bowl. Cakes are an exception to our policy. They may be bought from an outside vendor. Another exception may be made for wine and champagne at Sugar Bowl's discretion with a \$20 corkage fee per 750 ml bottle. Per Sugar Bowl policy, the bar may only be open for a 7-hour time period, as well as excess food may not be packaged and given as take out. A 23% service charge will be added to all food, beverage, fees & any services provided or contracted by the restaurant. Tax will be added to all charges. Menu, price & banquet information is subject to change up to 30 days prior to function. While planning your event please advise the Wedding Coordinator of any disabilities, food or beverage allergies, or other requests for you or your guests.

## **Gratuities and Taxes:**

A 23% service charge will be added to all food, beverage, fees and any service provided or contracted by Sugar Bowl. A 7.25% sales tax will be added to all charges including service charges as required by the California State Board of Equalization (subject to change).

## **Damages:**

The contracted client is responsible for the conduct of their guests and agrees to pay Sugar Bowl any and all damages arising from the occupancy & use of Sugar Bowl's facilities by the client, client contractors, guests & any person(s) present at the function. Payment for such damages shall be due immediately upon receipt of Sugar Bowl invoice detailing repair costs. Sugar Bowl will not assume responsibility for lost or damaged property left at Sugar Bowl before, during or following the event.

- Music must stop by 10:00 p.m. for all outside locations due to county noise ordinances.
- Music must stop by 2:00 a.m. for inside locations. Dogs and other pets must be left at home.
- Sugar Bowl does not allow any off-road activity for A.T.V.'s, dirt bikes or any such motorized vehicle.
- Please inquire for after party/late night music locations.

# HOW TO GET TO SUGAR BOWL

## From Reno:

Take Interstate 80 west to Truckee. For the fastest route from Truckee, take the last Truckee exit: Donner Pass Road. Turn left on to Donner Pass Road. Follow the road along Donner Lake and proceed uphill for approximately three miles until you are over the summit. Turn left at our main entrance to Sugar Bowl (a large Sugar Bowl sign is displayed on your left). This road is called Sugar Bowl Road.

If you prefer to stay on Interstate 80, take it over Donner Summit to the Soda Springs/Norden exit #174. Turn left on to Donner Pass Road (Highway 40), and continue for approximately about 3.5 miles passing Sugar Bowl's Village Gondola parking lot, until you arrive at the Sugar Bowl Main Entrance (a large Sugar Bowl sign is displayed on your right). Turn right onto Sugar Bowl Road and follow the instructions "Along Sugar Bowl Road..." on the next page.

## Along Sugar Bowl Road.....

Continue through the gate (gate code will be provided) and veer to the right at the 'Y' in the road following event signage. Travel through the downhill parking lot towards the large, green propane tank and follow the road towards the Village Lodge where The Lodge and Village wedding location are. You will take a left at the 'T' in the road and then a right when under the gondola into our courtyard where parking is available for your event. There is ample signage from Sugar Bowl Road directing you into your wedding location.

## From San Francisco/Sacramento:

Take Interstate 80 east towards Sacramento/Reno. We are approximately 100 miles east of Sacramento. As you approach Donner Summit, exit the Soda Springs/Norden exit #174. Turn right on Donner Pass Road (Old Highway 40), and continue for approximately about 3.5 miles passing Sugar Bowl's Village Gondola parking lot, until you arrive at the Sugar Bowl Main Entrance (a large Sugar Bowl sign is displayed on your right). Turn right onto Sugar Bowl Road and follow the instructions above - "Along Sugar Bowl Road..."





FRONT & BACK COVER BY COURTNEY AARON PHOTOGRAPHY



## EXTRAORDINARY EVENTS ON TAHOE'S DONNER SUMMIT

Please contact Weddings & Special Events Manager for further information at 530-426-6769