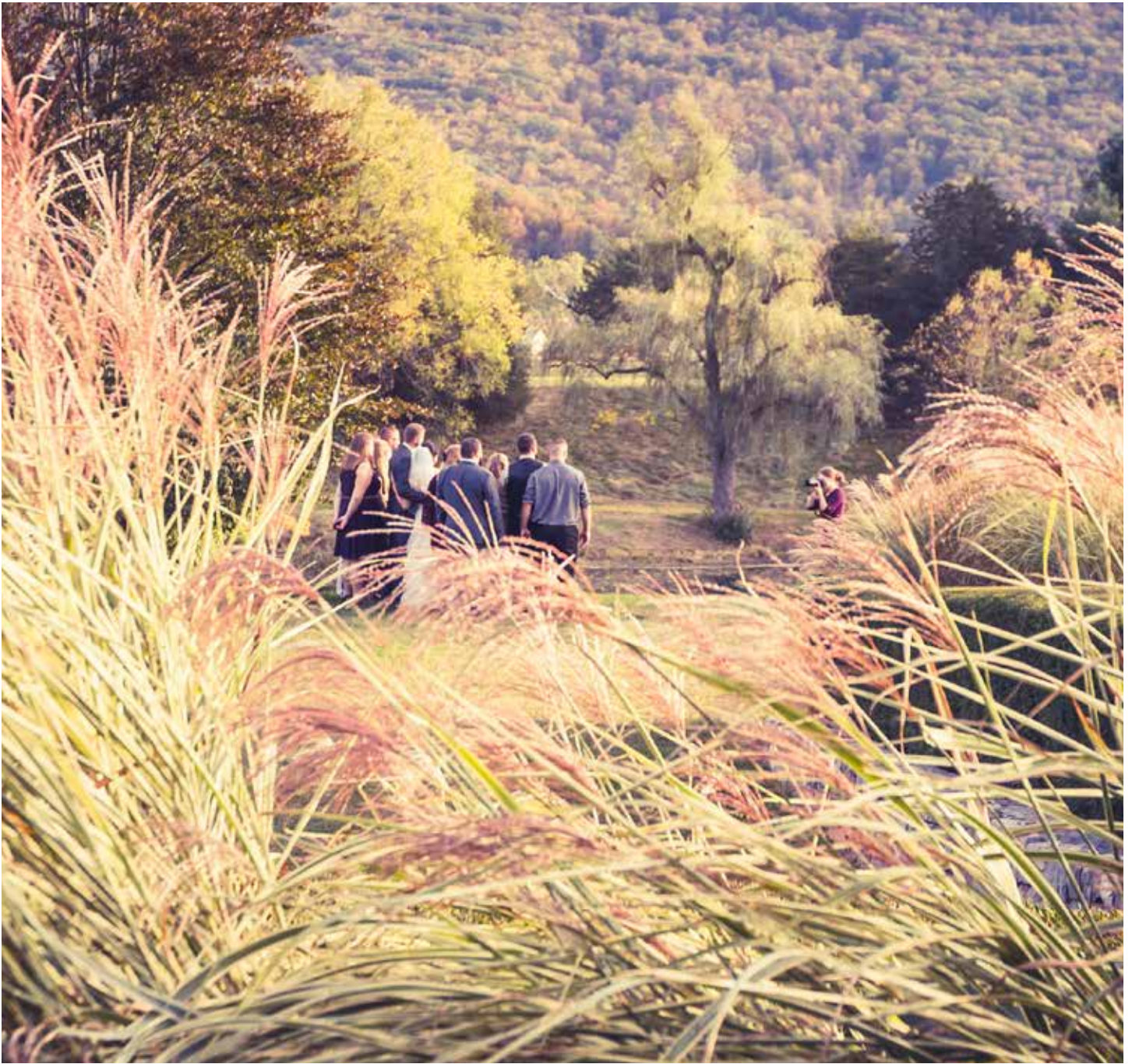




# ONE BARN FARM

*An Elegant American Country Estate*

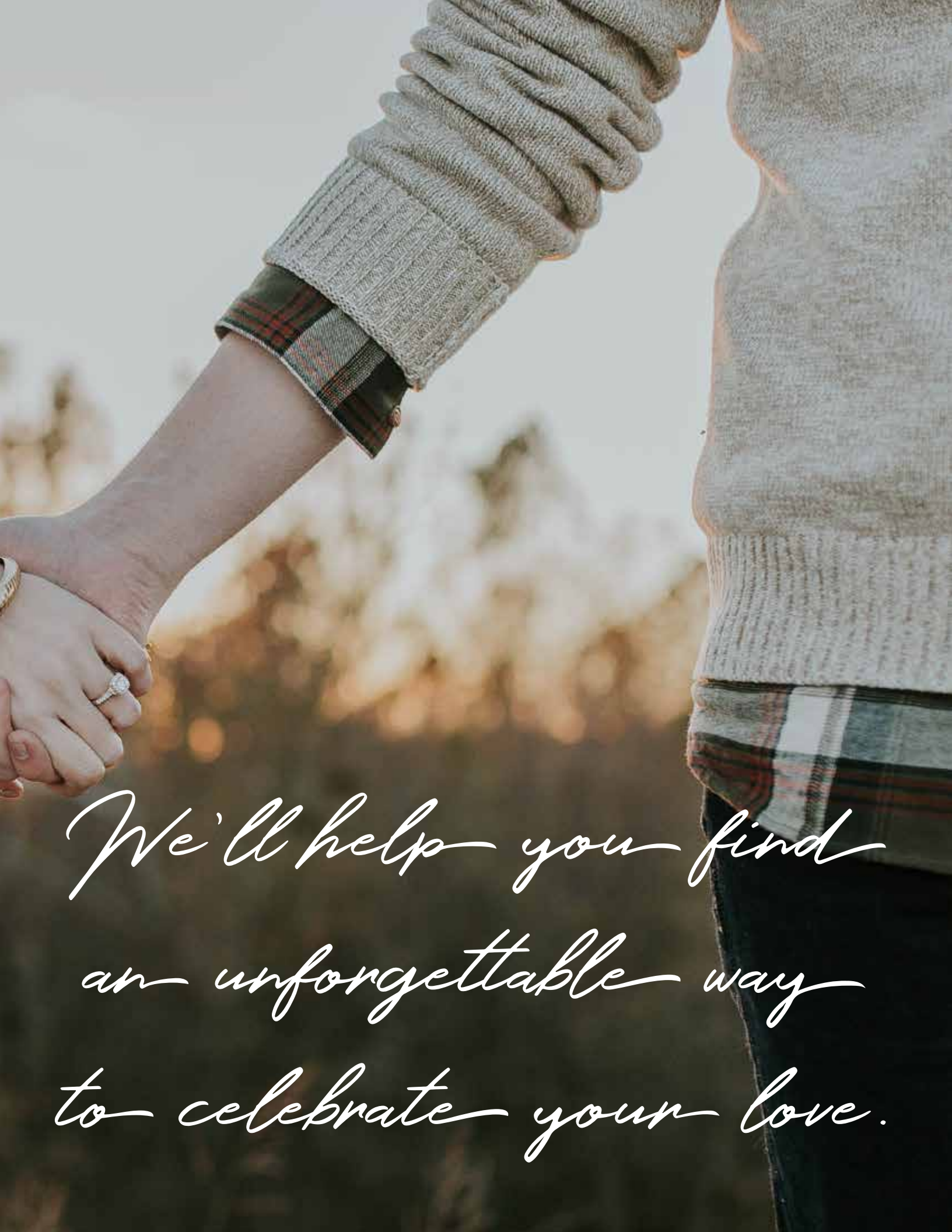


*2018*

WEDDING VENUE INFORMATION & PRICING

A close-up photograph of a person wearing a red, green, and white plaid shirt and a brown fur vest. They are holding hands with another person whose hand is visible on the right side of the frame. The background is a soft-focus field with a warm, golden light, suggesting a sunset or sunrise. The text is overlaid in a white, cursive font.

*You've found the  
person who makes  
your world wonderful.*



*We'll help you find  
an unforgettable way  
to celebrate your love.*



# Authentically different, just like you

**Y**ou don't need to look too far to find gorgeous (and popular) venues that say "You're important to us! We'll give you exclusive access to our venue for your special day!" They're almost a dime a dozen. But, their "day" truly means a day — 8-10 hours to set up, decorate, have your celebration and clean it all up. So, come and enjoy, but hurry up 'cause the next special couple is coming in right after you.

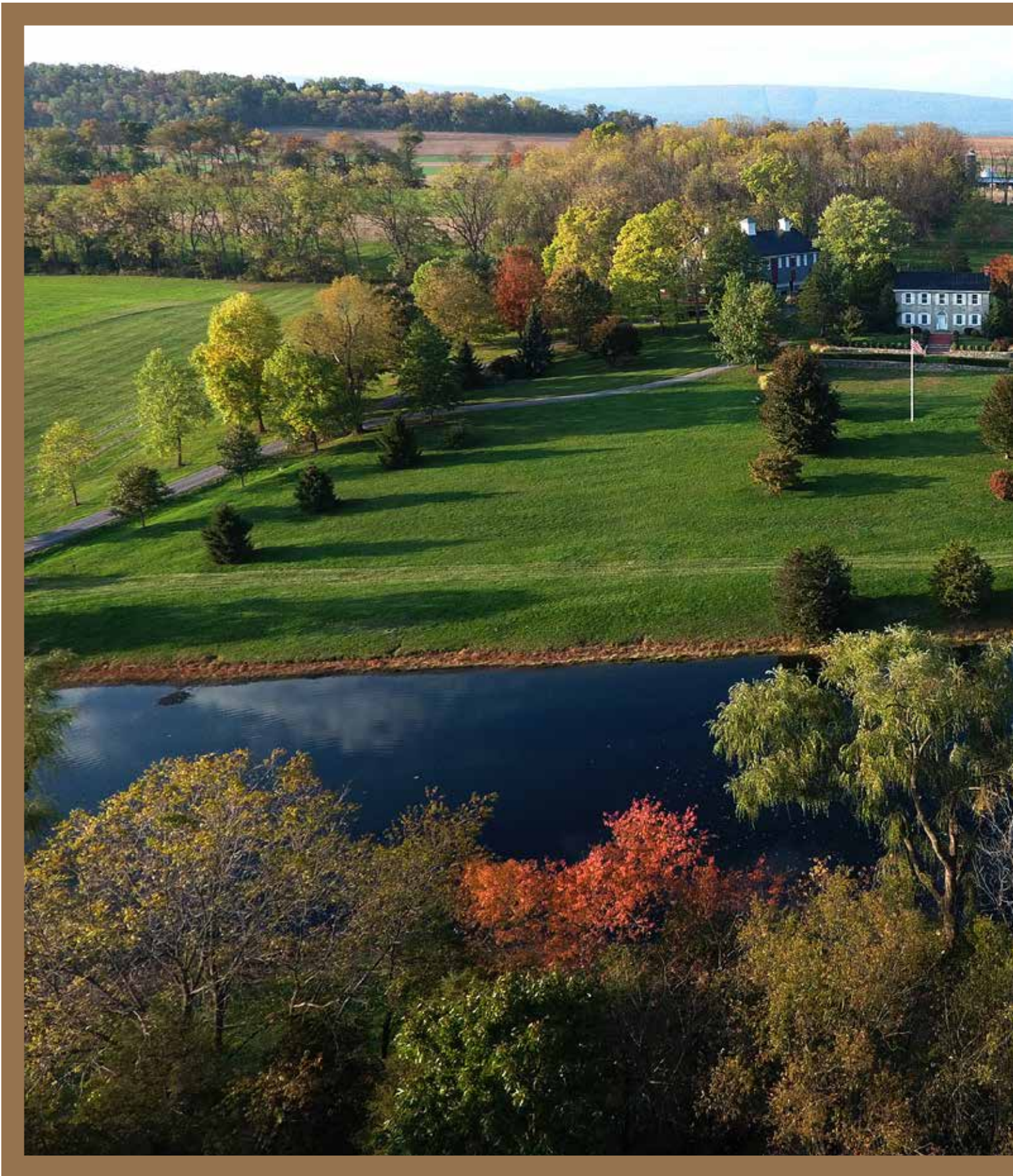
You're not a number. Or an assembly line widget.

You're alive. Full of life, energy and love. A couple in love, partners for life.

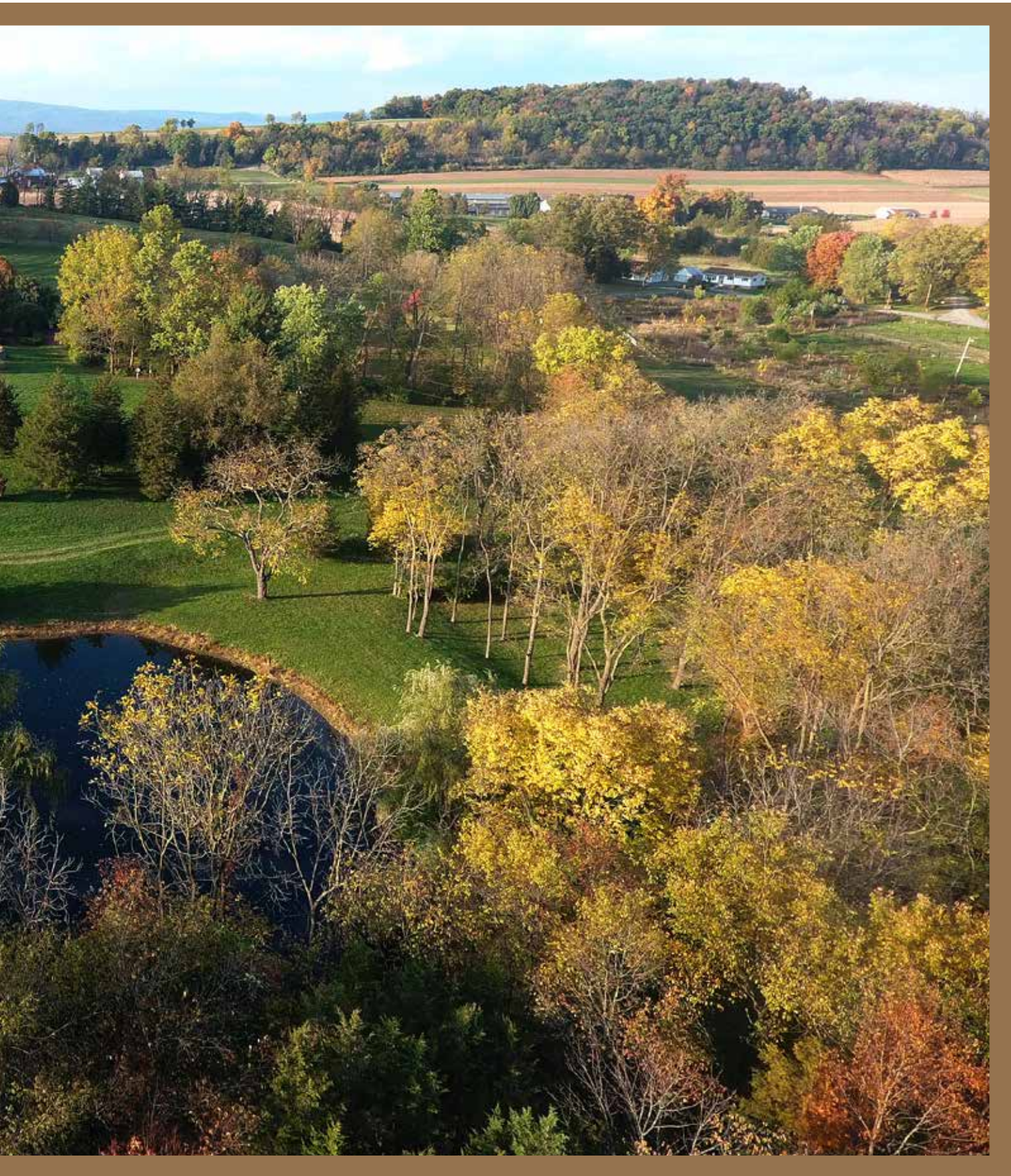
A couple whose family, friends and other loved ones mean the world. A couple who wants to give them an experience they'll never forget. A couple who wants the love you give and the love you share reflected in every aspect of your wedding.

If the idea of fitting everything you've dreamed your wedding to be into a space of 8-10 hours seems crazy and stressful to you, we understand. If you're looking for a venue that's truly different, that gives you time to enjoy the preparations as well as the party, that gives you creative flexibility to craft a signature experience, that gives you numerous locations to host your celebration, we invite you for a personalized tour of One Barn Farm. Can we brag that we're the most popular, marrying 2 or 3 couples each weekend May through October? No, we can't. Staying true to who and what we are is what helps you craft an experience that's true to **you**.





Timeless elegance. Natural beauty. Creative flexibility. Memories for a lifetime.



Four simple concepts at the heart of One Barn Farm's country estate.

# *Timeless Elegance*

The historic and stately architecture on the property provides a classic, elegant backdrop for your wedding. The 5,000 square foot Georgian-style farmhouse Mansion features a gorgeous, natural stone exterior. A warm, brick front entryway surrounded by formal, symmetrical landscaping leads you out to the expansive Estate Lawn. The courtyard to the Mansion's east features our Terrace Garden, a multi-leveled, warm brick patio ensconced by a country garden. While the Mansion interior is not included in the property rental for guest usage, it is available for the bridal party and immediate family for getting ready, freshening up and/or relaxing.

While the entire property is registered with the Historic Barn and Farm Foundation of Pennsylvania, our Bank Barn is a true Pennsylvanian classic. Built in the 1880's, it has been recently renovated, with upgrades to the flooring and lighting to accommodate large or small events. The barn accommodates up to 225 guests in the expansive main seating area; the two large side bays on the barn's north and south ends can accommodate additional guests or be used for special tables, catering, DJ, etc. The rustic post and beam interior is truly a blank slate — you can add lighting, fabrics and decor to suit your style. Two huge west-facing rolling barn doors and three east-facing balcony windows let in natural light and air, and the surrounding views. The three roof cupolas not only look stunning, but allow hot air to escape; multiple rustic-industrial ceiling fans also help keep the barn comfortable during hot weather. Heating towers are available for rent during cooler weather.









# Natural Beauty

Located in a quiet and serene valley in southern Union County, the One Barn Farm estate is surrounded by 360° of scenic views. You will find Jacks Mountain to the south, and rolling countryside and farmlands to the north, east and west. This viewscape creates a one-of-a-kind backdrop for your wedding festivities.

The estate itself features two large ponds, rolling hills, prairies and fields and woodlands, providing countless photo opportunities and spaces for your guests to enjoy. We encourage you and your guests to immerse yourselves in the property by taking advantage of the two miles of walking trails across the grounds.



# *Creative Flexibility*

**E**vening fireworks? A sparkler exit? Drinks and appetizers in the Terrace Garden? Jumbo lawn games near the pond? A ceremony in the woods, cocktail hour in the barn, casual dinner in the Estate Lawn's sunken tree grove, with a bonfire, make-your-own s'mores and a campfire sing-along at our fire pit? Yes, yes, yes, yes and yes!

We provide unmatched creative flexibility, and want to have a conversation about whatever your desires are, and find a way to satisfy them. We believe that's the best way to craft experiences worthy of your loved ones. Experiences they'll never forget.







Jacks Mountain

The P

Preserve Pond

Mill Pond

Parkin

Estate Lawn

Terrace Garden

Orchard Lawn



No matter your preferred event style, our property is quite flexible. Rustic, country, boho, woodland, classic, shabby chic, preppy, whimsical and more can work here.

Our rental includes the entire property, so you can use multiple spaces for various parts of your event. If this sounds overwhelming, don't worry. We would love to have a conversation to understand what you like, and can help you figure out the best way to utilize the grounds.

And, we're always open to finding new ways to use our property, so don't hesitate bringing any and all of your ideas to the table.

While we are a working, historic farm, we raise crops, not livestock, minimizing foul sounds and smells for your special event.

The One Barn Farm estate is nestled in the rolling foothills of the Appalachian Mountains. Jacks Mountain rises up in the south. Scenic and serene views can be found at every location on the property.



## *Mill Pond*

The large Mill Pond borders the lower Estate Lawn to the north and intimate, tree-covered spaces to the south. A stone fire pit will be installed near the Mill Pond in Spring 2018. End your evening with a cozy campfire (kindling, igniter and wood provided)!

## *Estate Lawn*

A multi-tiered expanse of flat lawn that accommodates large tents (300+), open-air events, reception lawn games and more. It adjoins the Mansion via a warm brick walkway and overlooks the Mill Pond. The lawn also has a sunken tree grove for woodland-style events.



## *Terrace Garden*

The courtyard off the east side of the Mansion houses our Terrace Garden, a multi-level warm brick patio surrounded by a country garden. Cocktails, ceremonies and small group events are perfect for this charming space. The garden adjoins the Orchard Yard.

## *Orchard Lawn*

This lawn is a huge swath of rolling land to the east and north of the Mansion and Terrace Garden, accommodating open-air events, lawn games and more. Our hiking trails wrap along the Orchard Lawn's perimeter, giving a 360° view of this country lawn.



## *The Prairie*

This expansive piece of property forms our southwestern boundary. This area provides an interesting backdrop for pictures. The far west side of the Prairie blends into the Preserve Woods, with picture opportunities and walking trails throughout.



## *Preserve Pond*

Our Preserve Pond sits opposite the Mill Pond, with the Prairie neighboring to the south. With habitats for our resident and visiting waterfowl, a gently sloping and treed lawn and the Preserve Woods on its west boundary, this pond area can host any type of event.

## *Woodland Promenade*

The Woodland Promenade is a wooded area just to the west/northwest of our Bank Barn. Our black walnut trees form a small grove for woodland-style events, and also create a charming canopy for one of our hiking trails leading out to the far western edge of the estate.



## *Bank Barn*

The Bank Barn seats 225 in the main barn area, with additional guest seating or space for special tables or vendors in the large side bays. The post-and-beam interior can be decorated in your style. Ceiling fans and rolling barn doors help keep temps comfortable.



# Our Weekend Rental

## **\$4000 WEEKEND EVENT RATE INCLUDES:**

- **Exclusive use of the property from Thursday through Sunday**, allowing you, your bridal party and event helpers to relax and enjoy the preparations before and the tear down activities after your event!
- **Use of our picturesque 90-acre estate grounds, with your choice of locations** for the ceremony, reception and other festivities.
- **Two hour scheduled rehearsal time** the week of your event (for booked wedding ceremonies).
- **On-site parking area with parking attendant** for ceremony and/or reception.
- **Chairs and tables for up to 225 guests.** We will set up and tear-down up to 225 chairs for both the ceremony (if applicable) and reception. Outdoor seating is typically white resin folding chairs, and white Chiavari chairs for indoor. We have an assortment of 5' and 6' round tables, 8' long tables and 5' round half tables.
- **Golf cart/utility vehicle transportation** (driven by One Barn Farm staff) to accommodate guests with special needs, and for transporting the bride/groom to various locations on the property for photos.
- **Event planner** to assist with day of coordination.
- **Access to property for engagement photos.**

*Contact us for small group events (50 or fewer, Sun-Wed only), corporate or family reunion rates.*

## **CUSTOMIZABLE ADD-ONS:**

- **Rehearsal dinner \$250.** Adds an additional two hours for dinner (location/space, tables and chairs only; food, beverage and decor not included), for a four-hour total rehearsal event.
- **Wooden arbor \$100.** A gorgeous, rustic arbor for your ceremony and/or photos.
- **Additional chairs and tables, and/or Chiavari chair cushions.** Contact us for details.

Pricing does not include taxes or \$500 refundable security deposit. Checks preferred; prices reflect a check/cash discount and other payment methods may be subject to an additional service fee. 50% deposit required to secure your desired date. Remaining balance due 60 days prior to event. In the event of cancellation, your deposit may be refundable, depending how far in advance cancellation is requested. Pricing, packages, and terms are subject to change at the sole discretion of One Barn Farm Fêtes.



# *Signature Experiences*

Stay tuned for our exciting experience-based packages. These packages will be focused around various entertainment themes that play to the unique features of our property.









*Memories  
for a  
Lifetime*



One Barn Farm is the picture-perfect location for your tent, lawn, barn, garden or woodland wedding, with 90 private acres encompassing stately, historic architecture and boundless scenic beauty. Along with offering you unmatched creative flexibility, our expansive estate consists of countless event spaces to help you deliver the ultimate wedding experience to your loved ones. One Barn Farm is located in the quiet and picturesque countryside of Union County, a convenient one-hour drive from Harrisburg, State College, Williamsport and Bloomsburg. Most of our 90 acres is available for use and estate-like in appearance. We encourage you to schedule a visit to see all of the superlative possibilities we offer.

## ONE BARN FARM

Village of White Springs  
2640 Red Ridge Road  
Mifflinburg, PA 17844

(570) 541-4604

[director@onebarnfarmfetes.farm](mailto:director@onebarnfarmfetes.farm)

[www.onebarnfarmfetes.farm](http://www.onebarnfarmfetes.farm)

