

# *Crooked Oaks Farm Pricing Guide*



## *Saturday Reception*

Times: 3 hours before event start  
time – 11pm

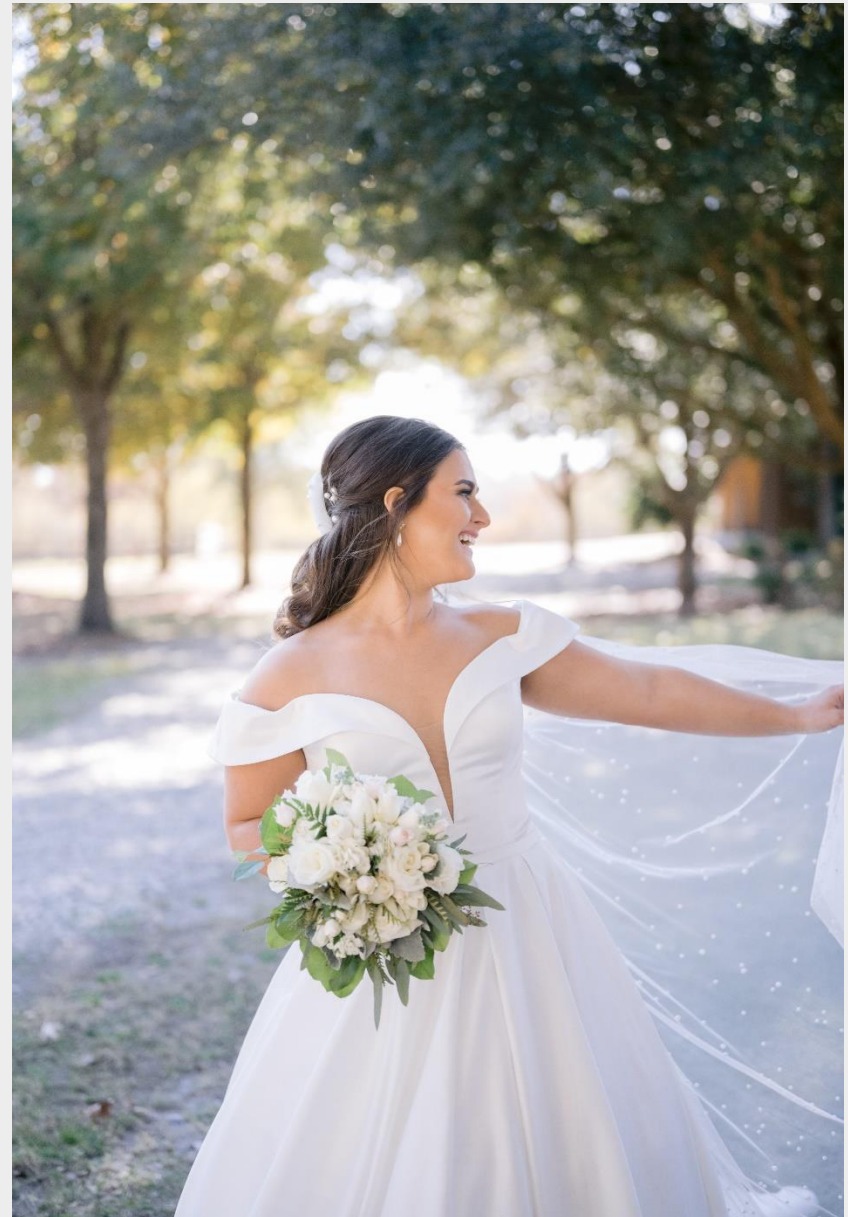
Included: Pavilion, Lodge &  
Breezeway

20 5ft round tables

24 Navy or White tablecloths

10 rectangular tables

240 chairs







## *Saturday Ceremony and Reception*

Times: 9am– 11pm

Included: Pavilion, Lodge &  
Breezeway

20 5ft round tables

24 Navy or White Tablecloths

10 rectangular tables

240 chairs

18 Rustic Church Pews (seat 6)

*Rehearsal Dinner, Ceremony  
and Reception*

Times: Friday: 5pm – 11pm /  
Saturday: 9am – 11 pm

Set up Rehearsal Dinner to be  
determined based on number of  
invited guests.

Included: Pavilion, Lodge &  
Breezeway

20 5ft Round Table

24 Navy or White Tablecloths

10 Rectangular tables

240 Chairs

18 Rustic Church Pews (seat 6)



## *Crooked Oaks Farm Pricing Guide*



-50% deposit is due to secure wedding date; remaining balance will be collected the week of the wedding.

-Add on lodging is available for 16 beds total on property {Lodge, Cabin, Barn Bedroom}

-1 night of lodging is additional \$800.

-2 nights of lodging is additional \$1500.

-Check in is Friday at 12pm & Checkout is Sunday at 11 am for two-day overnight events.

-All vendors and décor must be cleaned up by 11pm at end of event/wedding.

-Wedding Coordinator is **required** for day of wedding ceremony and reception.

-All Vendors must send in proof of liability of insurance, and must be approved by Crooked Oaks Management

-Extra Arbor is available upon request.

## *All Packages Include:*

- Access to the venue for a 2-hour engagement session prior to the wedding
- Ceremony Rehearsal
- Event space for both the wedding ceremony and reception
- Use of the lodge and cabin for the wedding party the day of the wedding
- Setup and breakdown for wedding ceremony and reception
- Complimentary parking with shuttle service (if requested)
- Access to the shuttling to the
  - “Gardens” for a private wedding

Shoot





# Elopement Packages



- We are pleased to offer Elopement packages for couples with no more than 30 guests.
- Access to the venue 4 hours before ceremony.
- Elopement is allotted at a two-hour minimum. If you need more than four-hours, it is a \$500 per hour charge.
- Access to the venue for a 2-hour engagement session prior to the elopement.
- Event space for both the wedding ceremony and small reception
- Use of the lodge for the wedding party the day of the wedding