



*Experience*

**WATERFRONT WEDDINGS  
AT POINT RUSTON**



# Event Venues

## Waterview Terrace

*Incorporate South Sound's premier outdoor space in your wedding!*

*Our covered terrace offers breathtaking waterfront views. The venue provides full roof coverage and is equipped with ceiling heaters and a luxury fireplace, to make this room ideal for events in any season. This uniquely designed space presents a beautiful backdrop for a wedding ceremony with a capacity for up to 200 people seated. For larger events, the terrace serves as an open cocktail hour scene for your wedding guests to enjoy pre-reception.*

## Sterling Ballroom

*Our grand ballroom invites ample natural light with floor-to-ceiling windows overlooking Commencement Bay and the Olympic and Cascade Mountains. This beautifully designed pillar-free space is the perfect setting for your indoor ceremony or wedding reception celebration. The Sterling Ballroom offers up to 380 guests in a seated capacity at table rounds.*

## Sterling Foyer

*The hotel's spacious pre-function area makes an incredible first impression as a warm welcome for your wedding guests! Our oversized foyer may be used as a pre-reception area or transitional space for up to 200 guests.*

## Private Dining Room

*An upscale private dining room is available for your rehearsal dinner or post-wedding brunch. Our expertly designed, locally inspired space offers extensive water views and delectable cuisine for up to 18 guests.*



# Amenities

## Spa Serein

*Our full-service day spa will spoil you with natural botanicals, aromatherapy, and Northwest-inspired treatments. You deserve to relish in luxury and unwind with our specialized nail services, facials, massages, and more! Experience serenity that extends beyond your appointment at Silver Cloud's Spa Serein. \*Group Packages and Wedding Specials available\**

## Copper & Salt Northwest Kitchen

*Indulge in the finest Northwest flavors at our upscale restaurant and bar. Featuring handcrafted cocktails, local produce, and fresh ingredients; our culinary team presents artisan dishes that capture the spirit of our region. Join us for breakfast, lunch and dinner daily. Brunch is available on weekends. Outdoor seating is available seasonally, overlooking Commencement Bay and the Olympic and Cascade Mountains. Enjoy an energetic atmosphere and highest quality dining experience in Tacoma.*

## Ready Room Suite

*Our wedding ready room suite is the perfect location to prepare for your big day! Located on the first level of the hotel, this space offers convenient access to the venue rooms; but is secluded enough for your privacy. The ready room suite is able to accommodate up to 6 people in the room comfortably. Order room service from our onsite restaurant while you await the celebration!*

## Rooftop Pool & Terrace

*Dip your toes in our stunning rooftop pool and whirlpool, located on the fifth floor of the hotel. Relax and enjoy scenic village views of Point Ruston, while sipping on one of our specialty beverages or snacking on a delicious northwest appetizer.*



# Accommodations

## Guestrooms & Suites

Wake up to crisp ocean air and the sound of waves lapping the shore at Silver Cloud Hotel Tacoma at Point Ruston Waterfront. Our stunning 194 guestrooms and suites are equipped with spacious room designs, Signature Silver Cloud Collection Beds, custom furnishings and curated amenities. Appreciate the rich history of the area with traditional Pacific Northwest accents, complimented by high tech modern features in every room.

## Room Type Selections

- Waterview Suite*
- Waterview Family Suite*
- Waterview King Jacuzzi Room*
- Waterview Deluxe King Bed Room*
- Waterview King Room or Two Queen Beds Room*
- Village View King Bed Room or Two Queen Beds Room*
- Accessible Rooms (available upon request)*

## Amenities

- Complimentary high speed wireless internet access*
- 65" high definition flat screen television*
- Premium cable TV*
- Aveda bath products*
- Silver Cloud Signature Mattress*
- Caffé D'arte Coffee*
- Compact Refrigerator*
- Iron and ironing board*
- Work space with ergonomic chair*
- In room electronic safe*



# Local Area

## Point Ruston Village

*Experience the finest restaurants, boutique shops and exciting entertainment at Point Ruston Village. Take a relaxing stroll along The Waterwalk with spectacular shoreline views and enjoy a movie at the luxury style theatre. Point Ruston's urban community also offers a seasonal farmer's market with fresh produce and summer concerts with live local entertainment every week.*

## Chamber's Bay Golf Course

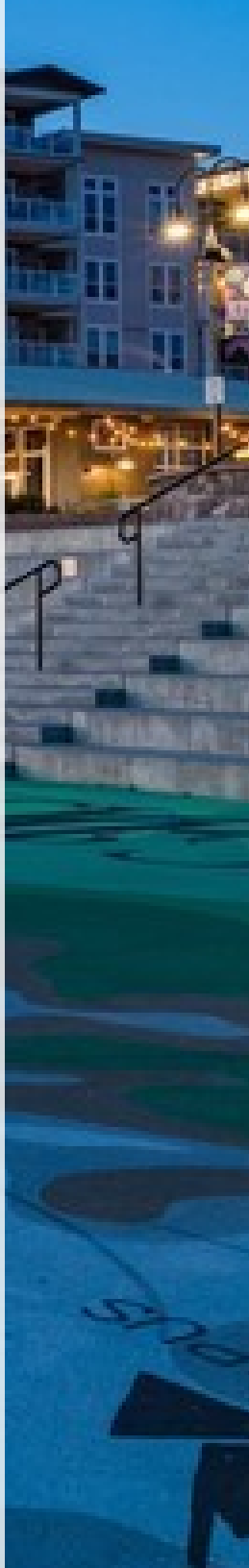
*Tee off for a championship experience at Chamber's Bay world-class golf course. With more than 950 acres along the shores of Puget Sound, you will enjoy breathtaking rounds with windswept sand dunes and extensive fairways. Located at the southwest point in University Place, Washington, this course offers a Pacific Northwest landscape with a scenic backdrop of the surrounding Olympic and Cascade Mountains. As one of the top public courses in the nation, This famous course provides an authentic links experience with a Scottish origin design and rich history of the area. Offering a full 18-hole, walking-only course, this is an experience built for golfers at any ability level.*

## Point Defiance Zoo & Aquarium

*Discover your sense of adventure at Point Defiance Zoo & Aquarium, located just north of Point Ruston. The 29-acre zoo now includes the Pacific Seas Aquarium, an underwater delight with habitat exhibits ranging from Baja California to the Pacific Northwest. The Zoo is set in the heart of Point Defiance Park, a beautiful destination with 760 acres of natural forest, saltwater beaches, botanical gardens and breathtaking views of the Puget Sound.*

## Museum of Glass

*Immerse yourself in contemporary culture by touring the Museum of Glass, located just five miles from the hotel. Inspired by local artist Dale Chihuly and designed by Canadian architect Arthur Erickson, the museum offers daily live demonstrations and exhibits to explore throughout the beautiful city of Tacoma. Ignite creativity for all ages and plan your visit to the Museum of Glass in Tacoma.*



# *Ruston Romance*

## *Wedding Package*

*\*Starting at 50 Guests\**

- Complimentary one night stay in Waterview King Guestroom*
- Valet parking overnight for one vehicle*
- Menu tasting & consultation for up to four people (applies to weddings with 100+ guests)*
- First look private moment for wedding couple*
- Access to hotel public areas for photos*
- One hour wedding rehearsal (based on availability)*
- Complimentary ready room suite (based on availability)*
- Dedicated banquet captain & team during your event*
- Hotel signature centerpieces*
- All tables & signature banquet chairs*
- Hotel signature table linen & napkins*
- China, glassware & silverware*
- Dance floor for wedding reception*
- Discount on guestroom rates*
- Custom booking link for guestroom reservations*
- 50% discount on one year anniversary stay*



# Pricing

## Saturday Events

*Food & Beverage Minimum: \$24,000 + up*

## Friday & Sunday Events

*Food & Beverage Minimum: \$18,000 + up*

## Daytime & Weekday Events

*Food & Beverage Minimum: \$10,000 + up*

## Peak Date Events

*Food & Beverage Minimum: \$30,000 + up*

## Facility Rentals

*Setup Fees: \$3,500 + up*

*(pricing varies per venues selected)*

## Day of Coordination Services

*All weddings hosted at the Silver Cloud Hotel require an approved day of coordinator present the day of your event. Contact our sales team about recommendations for preferred planners and vendors.*

*\*General price range quoted above as a reference. Please inquire with Sales Department for pricing and availability over specific dates. Pricing above is subject to change.\**

# Preferred Vendors

## Wedding Planning & Day of Coordination Services

[A Piece of Cake Events](#)

[Blue Wings Events](#)

[Gian Events](#)

[Pennie's Events](#)

## Party Rentals

[American Party Place](#)

[BBJ La Tovola Specialty Linen](#)

[CORT Party Rental](#)

## Beauty

[Elizabeth White Artistry](#)

[The Intaglio Salon](#)

## Photo

[Christelle Elbert Photography](#)

[Emily Fisher Photography](#)

[Tasha Owen Photography](#)

## Music

[Arcobaleno Strings](#)

## Officiating Services

[Kathy Jones](#)

## Cakes

[Celebrity Cake Studio](#)

[Corina Bakery](#)

[Spilled Butter Desserts](#)

## Floral

[Blitz & Co. Florist](#)

[Oak and Fig Floral](#)

[Plateau Florist](#)

[Specialty Floral Design](#)

## Transportation Services

[British Motor Coach](#)

[Butler Seattle](#)

[Bayview Transportation](#)

## Disc Jockey

[Magnolia Rhapsody](#)

[Velvetone Events](#)

## Video

[Sound Originals](#)

[True View Productions](#)

*Silver Cloud has selected this list of experts in the industry to enhance your wedding experience at our venue. We encourage the utilization of these professionals for your upcoming wedding. Please note the list above represents individual businesses, unaffiliated with Silver Cloud Hotels.*



# Hotel Policies

## Group Guestrooms

*The hotel is pleased to offer discounted guestroom rates for your wedding. A group discount will be applied on a first-come, first, serve basis. The hotel will generate a custom online booking link for your guests to secure reservations. If you are interested in contracting group guestrooms, please inquire with the Sales Department at the hotel.*

## Overnight Guest & Event Parking

*Onsite valet parking is available on a first-come, first-served basis at the hotel. Daytime event parking is offered at a rate of \$18.00 plus tax per day for event attendees (\$15.00 plus tax hosted event parking). Overnight valet parking is offered at \$36.00 plus tax per night for registered guests of the hotel. Guests will be charged a full day's rate if their vehicle is left in the parking garage after the hotel's standard 12:00 p.m. checkout time on their scheduled departure date. Parking rates are subject to change without notice. The hotel does not offer self-parking.*

## Deposit Schedule

*The Hotel requires a nonrefundable deposit which represents 50% of the total estimated banquet charges (total food & beverage minimum, setup fees, and meeting room rental) from the event, upon signature of a wedding contract agreement, in order to secure event space accordingly. This deposit will apply to the event's total estimated charges. The remaining balance is due sixty (60) days prior to the event date. Full payment of the remaining total will be required upon the conclusion of the event.*

## Taxes & Service Charge

*A customary 24% taxable service charge (14% distributed to service personnel, 10% retained by the hotel to offset administrative costs) plus applicable sales tax will be applied to all pricing. Prices are subject to change without notice.*



*Contact Us*

**SILVER CLOUD HOTEL  
TACOMA AT POINT RUSTON  
WATERFRONT**

(253) 319-8300

5125 Grand Loop, Ruston, WA 98407

[rus-sales@silvercloud.com](mailto:rus-sales@silvercloud.com)

*Please contact our Sales Department with any questions or to schedule your tour.*