

## *Weddings*



The Loft



Davie & Forsyth



East Terrace



West Terrace



Bridal Suite



Groom's Room



Yadkin Rooms



The Granary

## *Packages*

### THE INCLUSIVE

Our WinMock Inclusive Package offers you maximum value for your special event by including food and beverage along with event rentals like linens, china, flatware and glassware. By choosing WinMock to provide many of your wedding event needs while significantly reducing costs.

### A LA CARTE

In addition to full-day, exclusive use of the main facilities and terraces, our A LA Carte Package includes your own caterer, from our approved list, and work with them directly.

## *Inclusions*

WITH BOTH PACKAGES YOU ALSO RECEIVE:

Dedicated Staff for the Event  
Tables for Indoor/Outdoor Use  
Banquet Chairs for Indoor Use  
50 White Garden Chairs for Indoor/Outdoor Use  
Custom Room Layout Diagrams  
Vendor Consult Time

Complimentary Wireless High Speed Internet Access  
Decorative Easels\*

On-site Parking with Overflow Options

Complimentary Engagement and Bridal Portrait Session Time\*

Scheduled Rehearsal Time\*

Subject to availability

- One-Time Setup and Breakdown
- Pipe and Drape for Loft Ceiling
- Event Re-Set from Ceremony to Reception
- Custodial Services for Before and After  
General Cleanup
- Linen-Covered Trash Cans
- Restroom Amenities

Contact us now and start planning your dream wedding!

*The Loft*





featuring the former hayloft's original thirty-foot gothic arched ceiling and nearly 5,000 square feet of now-stopping, exquisite ballroom accommodating up to 300 guests.

The Loft also features a small mezzanine that overlooks the entire space which has become a favorite spot for the perfect bouquet toss.

---

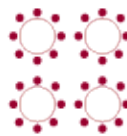
[START PLANNING](#)

---

The Loft Capacity & Floor Plan



ft<sup>2</sup>



DIMENSIONS

SQUARE  
FOOTAGE

CEREMONY

CLASSROOM

RECEPTION

BANQUET

138x34

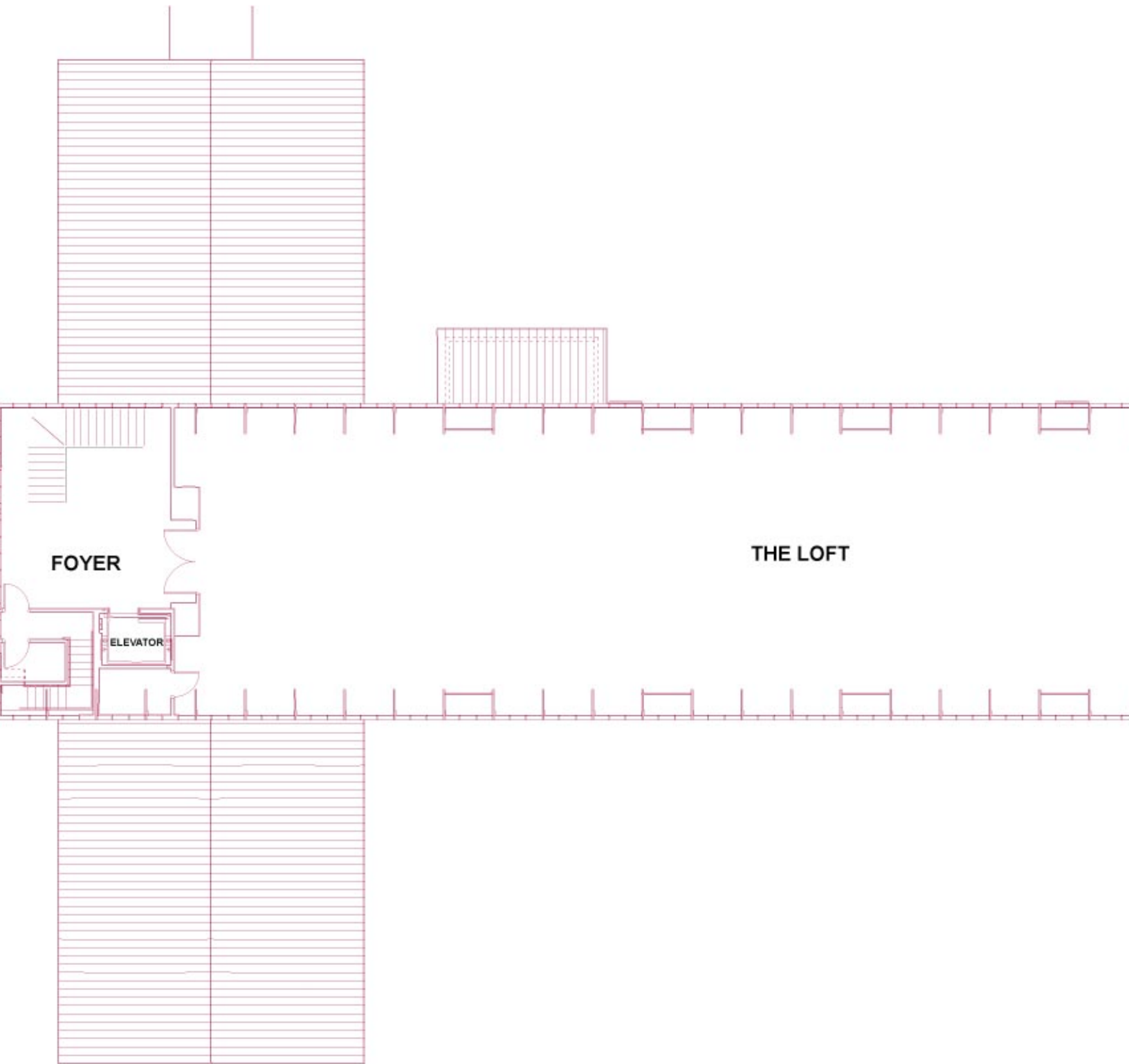
4692

400

275

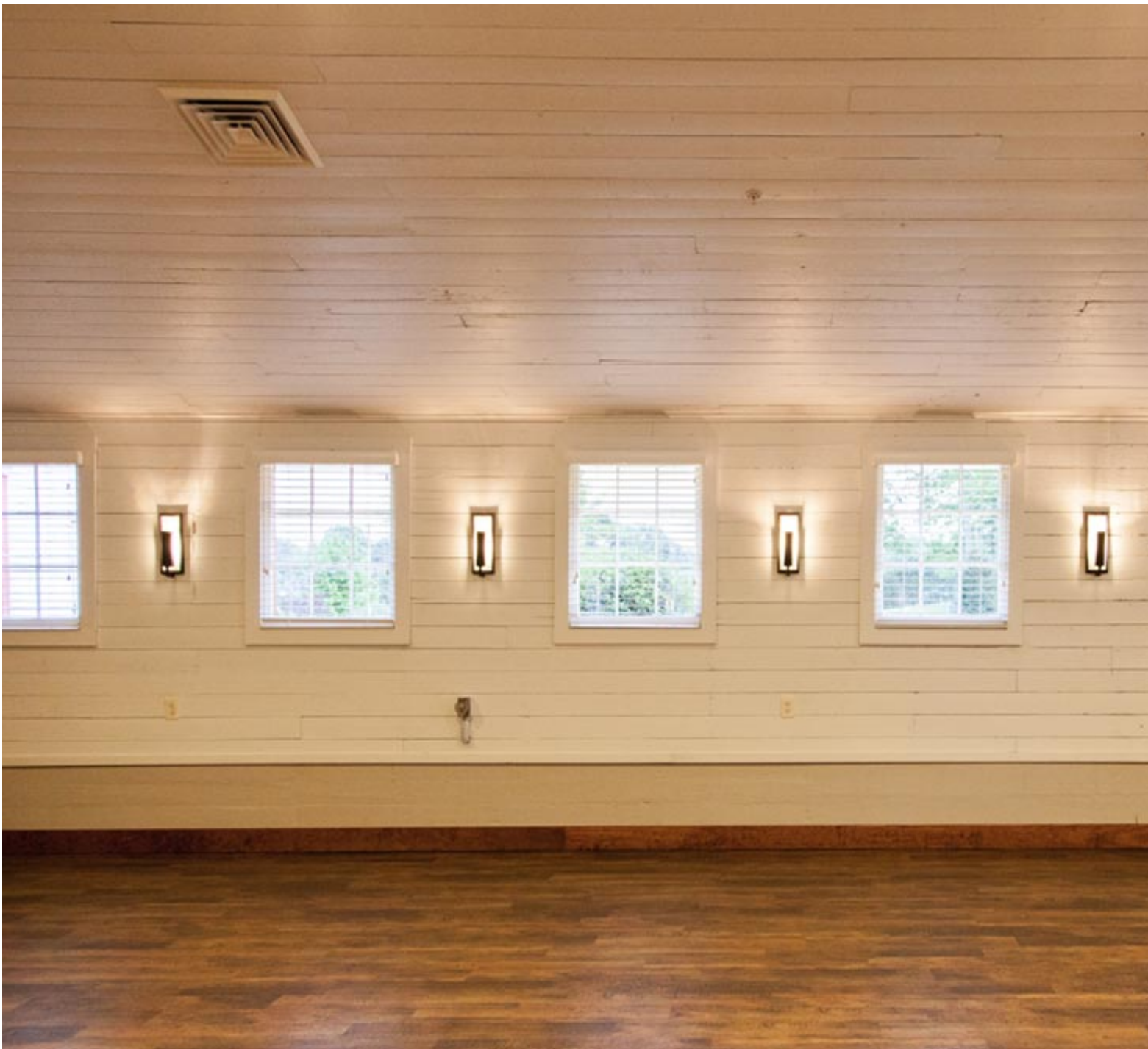
450

300












## *Davie & Forsyth Rooms*



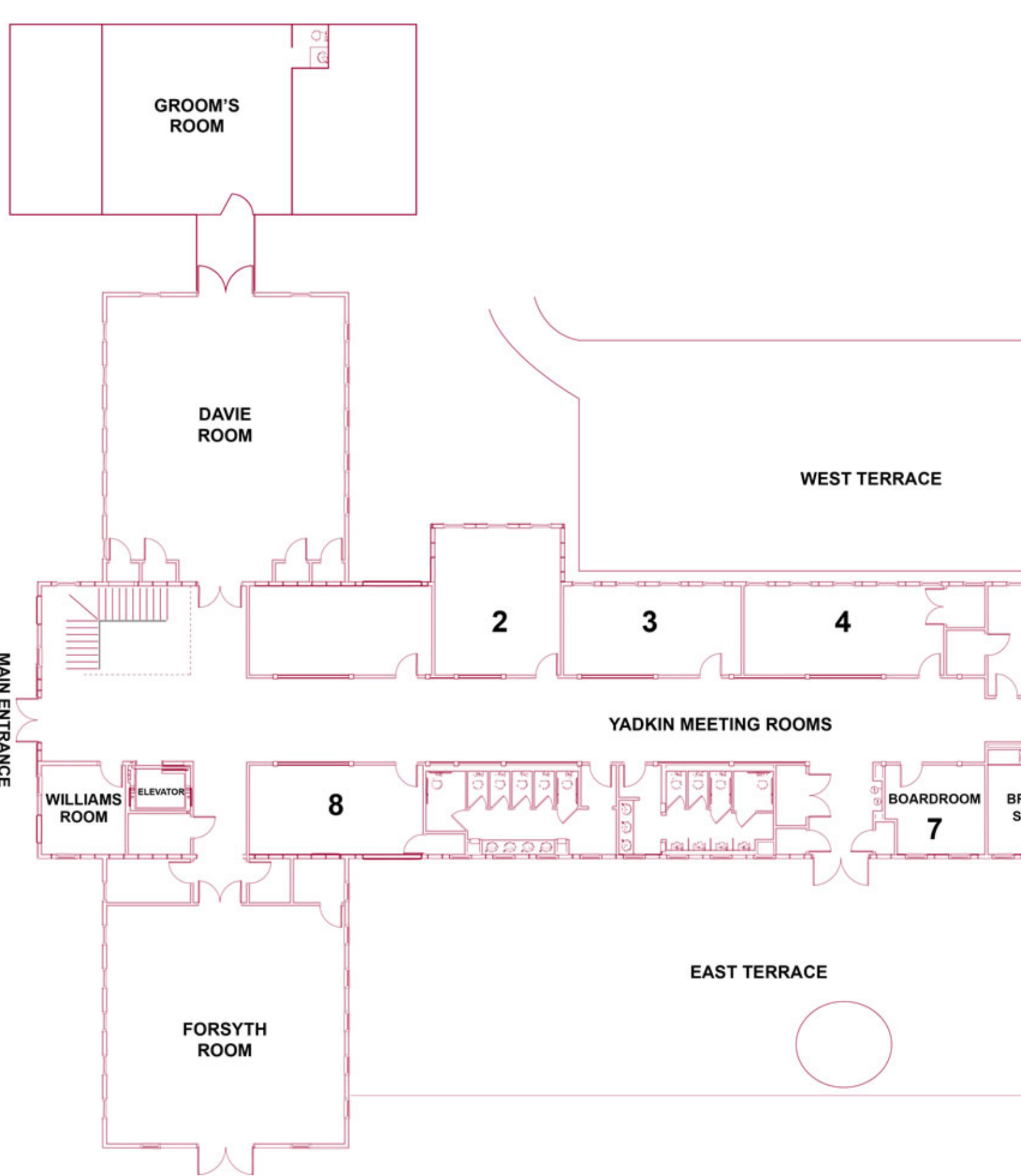
With charming vaulted ceilings and carefully restored finishes, our Davie and Forsyth Rooms, located on the second floor, offer direct access to our outdoor terraces.

START PLANNING

### Davie & Forsyth Rooms Capacities & Floor Plan

							
	DIMENSIONS	SQUARE FOOTAGE	CEREMONY	CLASSROOM	CONFERENCE	U-SHAPE	RECEPTION
DAVIE	35x33	1155	128	72	40	28	100
FORSYTH	33x33	1089	128	72	40	28	100





## *East Terrace*

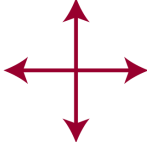



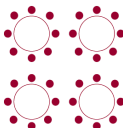


et against the backdrop of WinMock's signature rounded red roof, our expansive East Terrace complete with outdoor lighting, a picture-perfect circular stage and lovely overlook.

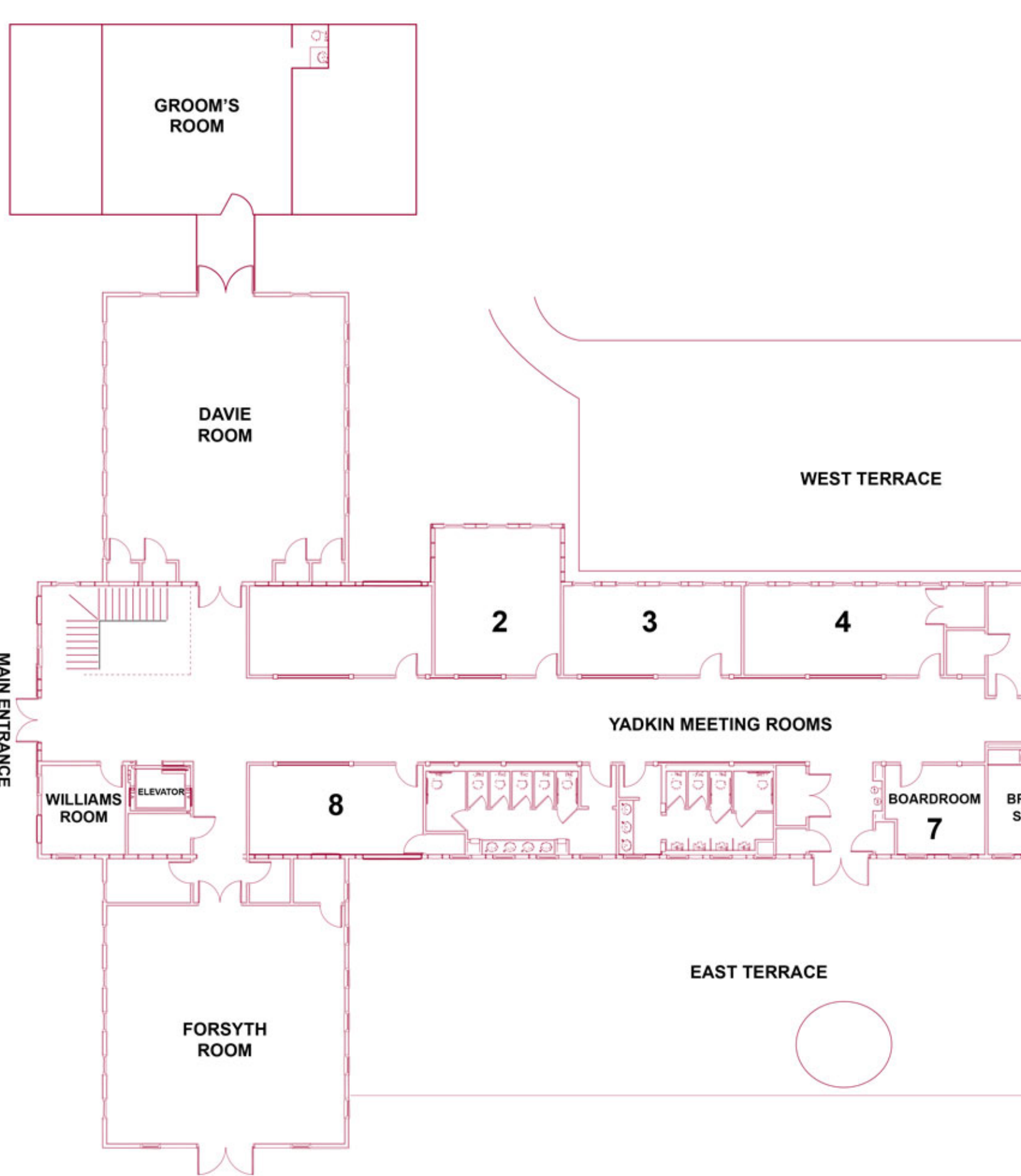
ne East Terrace features a large finished flat surface, which can be tented as needed and set in  
ouples frequently pair this outdoor space with indoor wedding events to create an interesting

START PLANNING

### East Terrace Capacity & Floor Plan

				
DIMENSIONS	SQUARE FOOTAGE	CEREMONY	RECEPTION	BANQUET
40x120	5850	400	400	300

^





## *West Terrace*





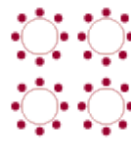


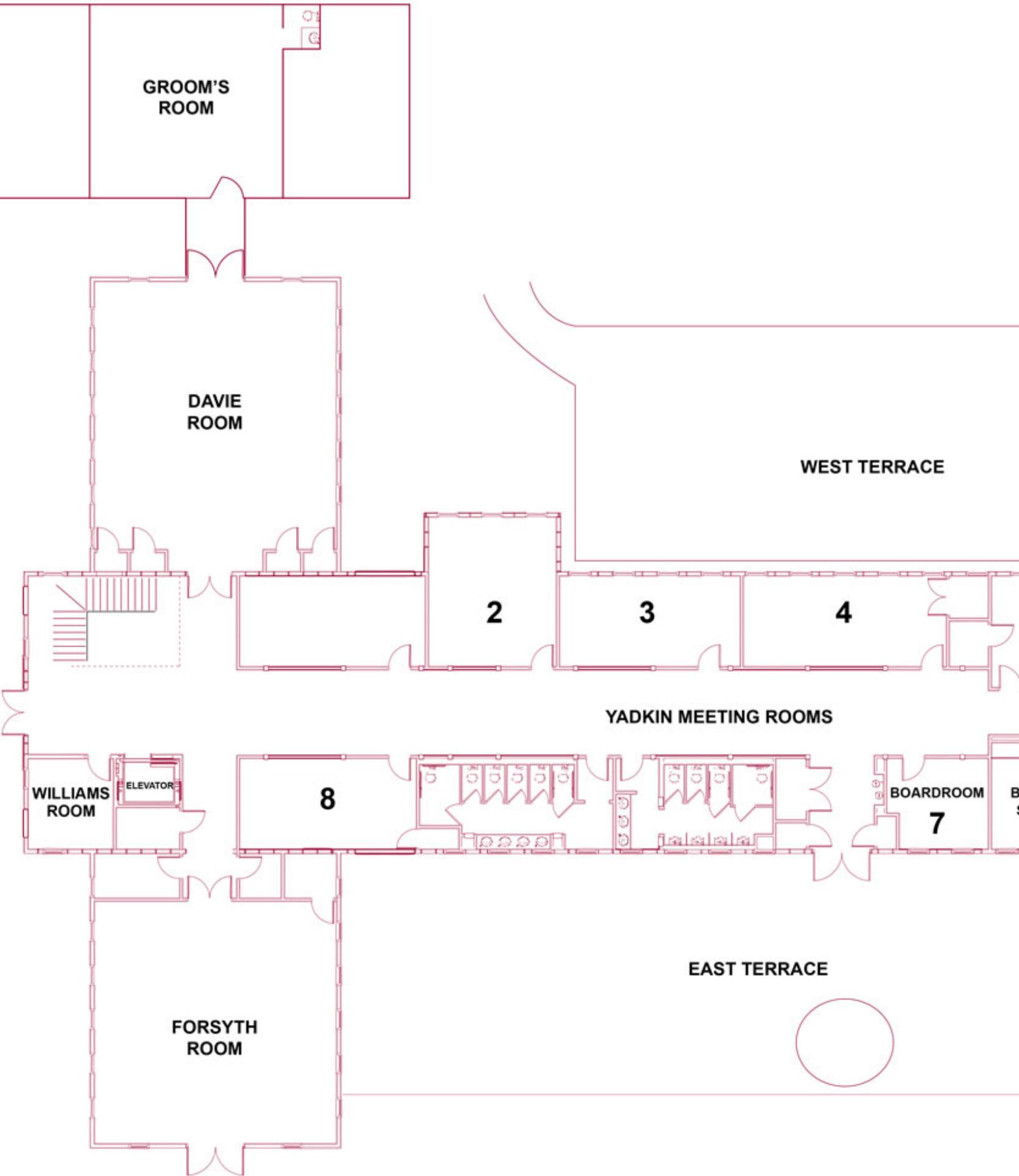
Follow a winding paved trail down a grassy knoll to our West Terrace, complete with outdoor lighting and landscaping.

he West Terrace features a finished flat surface, which can be tented as needed and set in a m  
ouples frequently pair this more intimate outdoor space with indoor wedding events to create

START PLANNING

## West Terrace Capacity & Floor Plan

				
DIMENSIONS	SQUARE FOOTAGE	CEREMONY	RECEPTION	BANQUET
30x80	5400	250	300	120



## *Bridal Suite*



Our elegant Bridal Suite includes comfy seating, an oversized floor length mirror, a tall hanging  
restroom and the perfect spacious vanity wall with room for your entire bridal party to get read

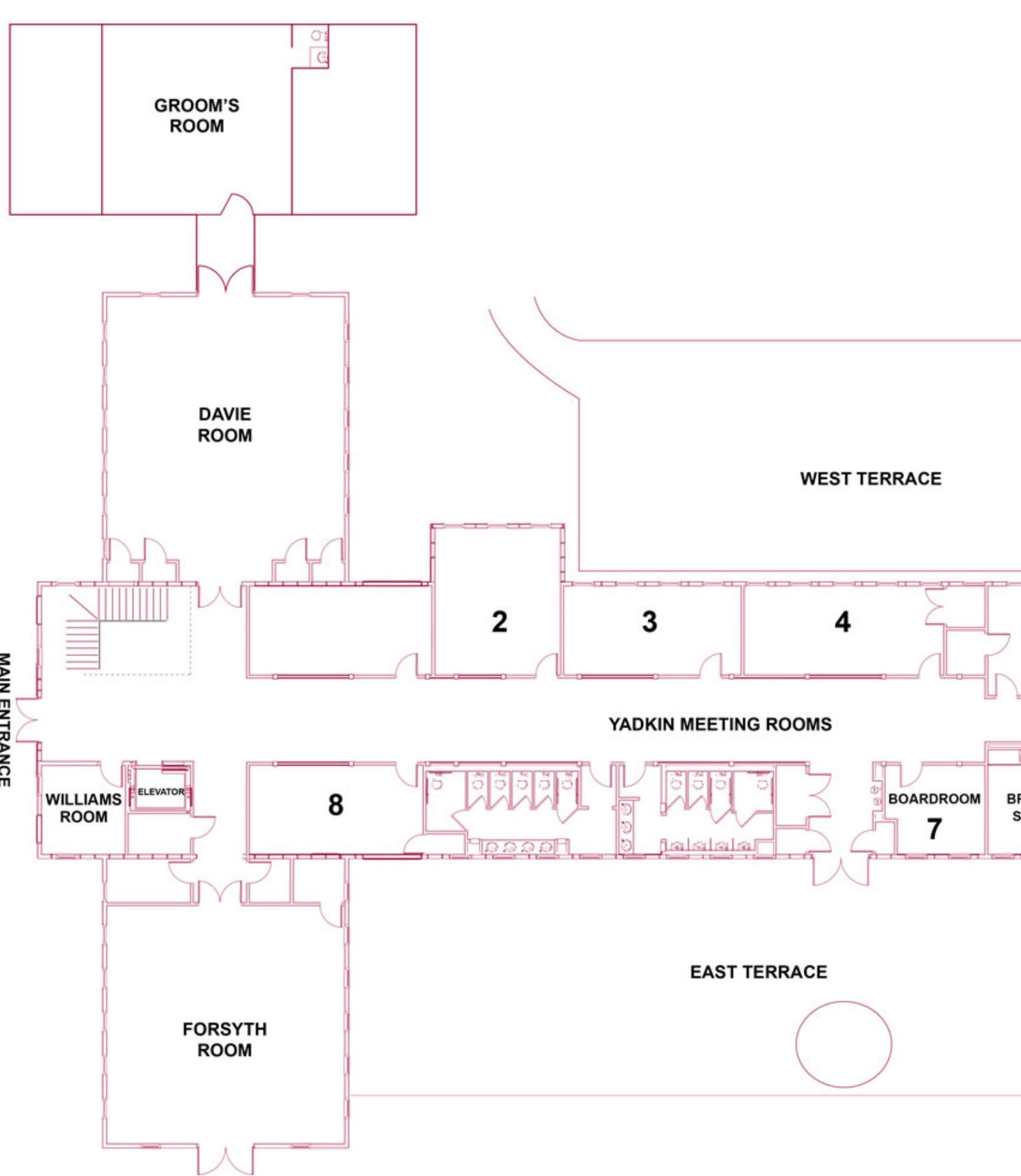


# The Bridal Suite Capacity & Floor Plan

ft<sup>2</sup>

DIMENSIONS

420



## *Groom's Room*



ur Groom's Room features handsome soft seating, space for beverages and snacks, a private r  
course, a pool table for the groom and his lucky groomsmen to enjoy. It has become one of the m

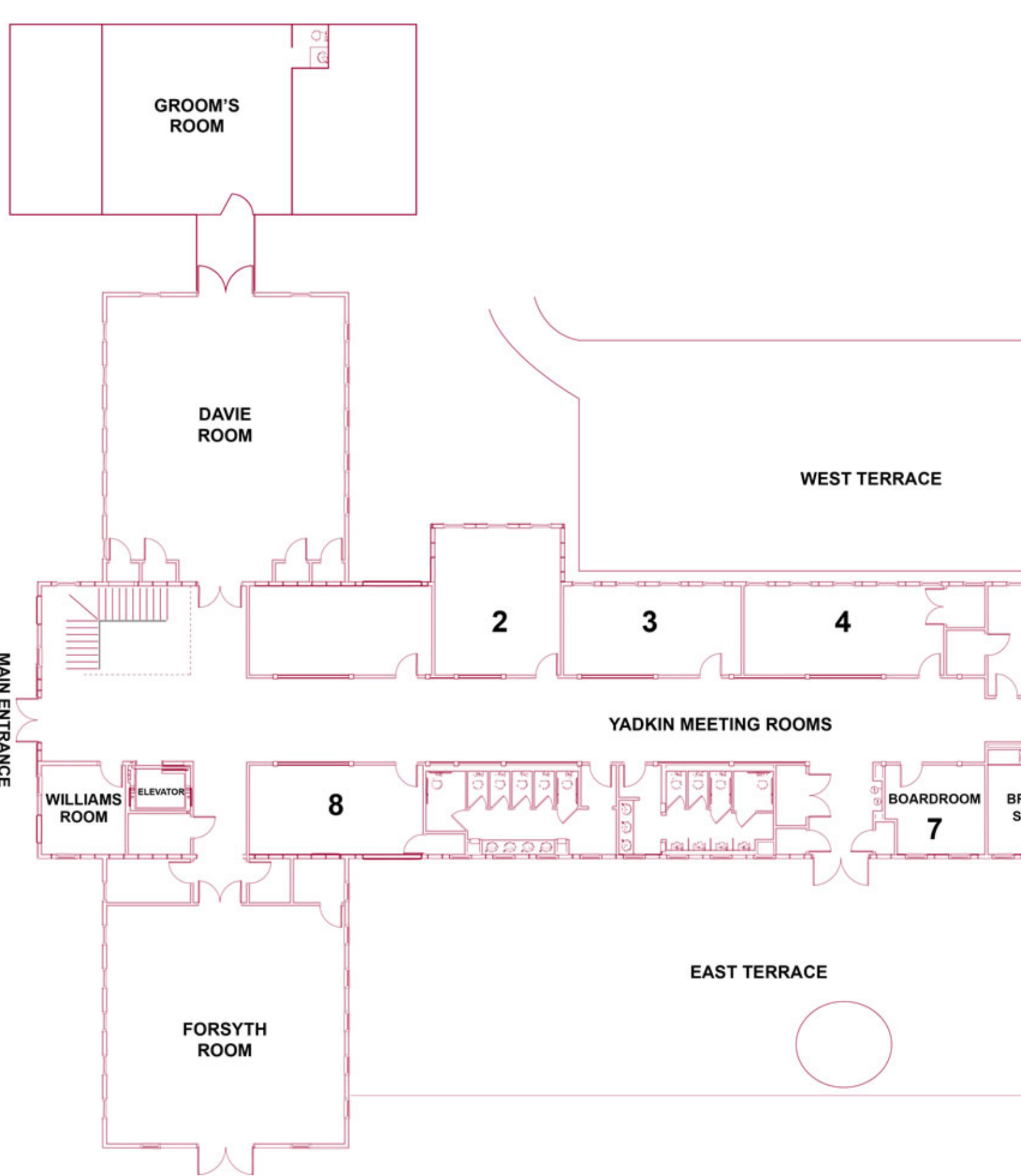
Groom’s Room Capacity & Floor Plan



ft<sup>2</sup>

DIMENSIONS SQUARE FOOTAGE		
22x23	506	





## *Yadkin Rooms*



ne property's former stables have been repurposed and transformed into spaces that are perfect for your wedding day. Located on our lower level, our Yadkin Rooms are ideal for a band's dressing room

photo booth set-up or children's playroom.

START PLANNING

## Yadkin Rooms Capacities & Floor Plan

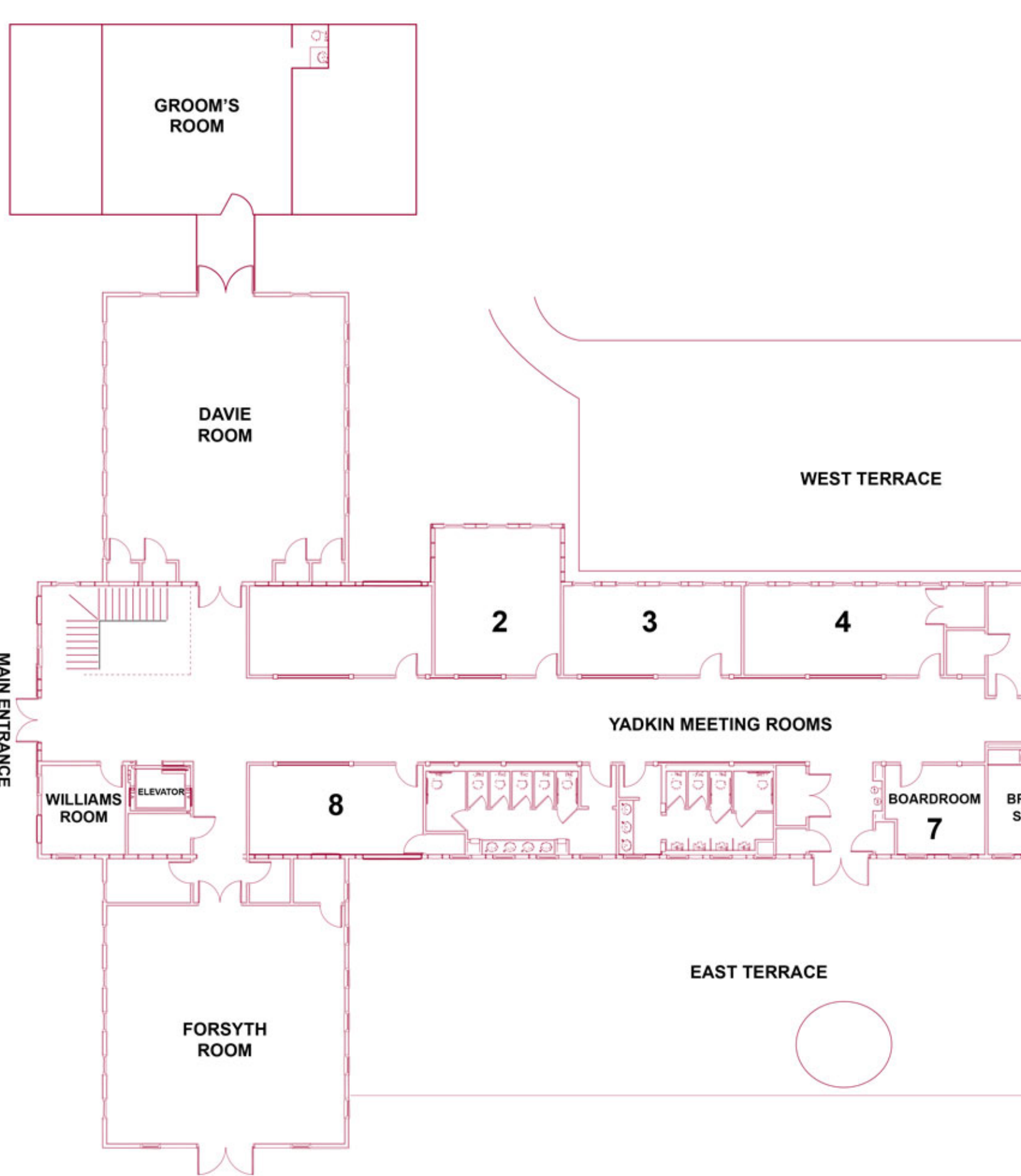


ft<sup>2</sup>



RM.	DIMENSIONS	SQUARE FOOTAGE	CEREMONY	CLASSROOM	CONFERENCE	U-SHAPE
-----	------------	-------------------	----------	-----------	------------	---------

2	17x20	340	40	24	22	20
3	25x12	300	30	18	16	14
4	29x12	348	36	24	122	20
5	20x12	240	26	18	16	14
8	23x12	276	30	18	16	14





## *The Granary*










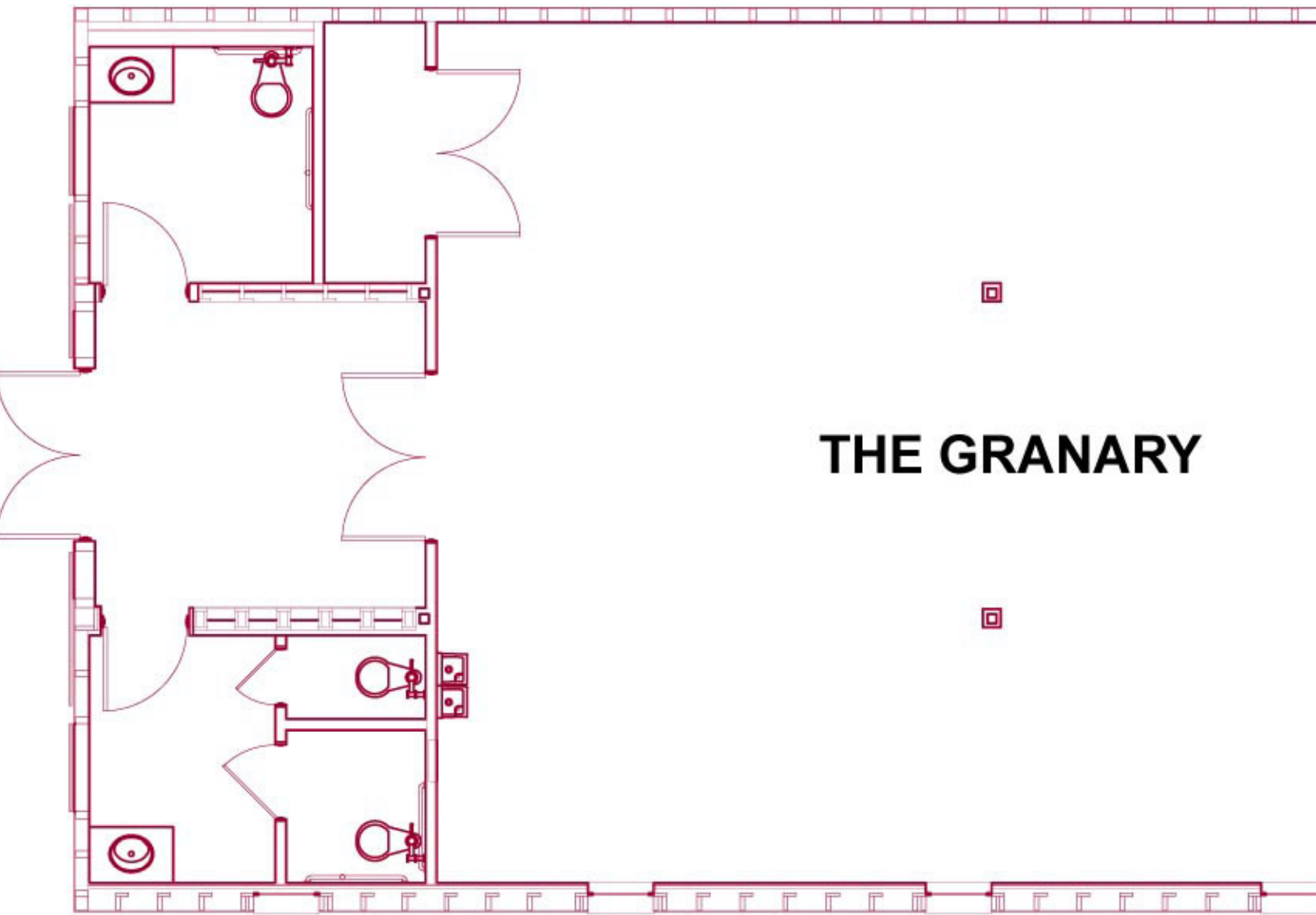
Just steps from the main property sits The Granary at WinMock, filled with historic character and

This space features soaring wooden beam work, carefully designed lighting and is a serene, private space for ceremonies, receptions, rehearsal dinners and parties, ideal for up to 80 guests.

START PLANNING

### The Granary Capacity & Floor Plan

						
DIMENSIONS	SQUARE FOOTAGE	CEREMONY	CLASSROOM	CONFERENCE	U-SHAPE	RECEPTION
29x49	1421	160	76	36	45	104



[↑ Other Venues \(back to top\)](#)