



# Bristol Harbor Inn

The Most Complete Wedding  
Destination in Rhode Island



Situated Directly on Narragansett Bay, the Bristol Harbor Inn is the Premier Boutique Waterfront Hotel and Event Facility in Historic Bristol, Rhode Island

Thank you for considering Bristol Harbor Inn and Waterfront Pavilion. Whether you're planning an afternoon or evening celebration, our private, waterfront location, with spectacular 180-degree views of Bristol Harbor and Narragansett Bay, will enrich your special day.

### **RESERVE YOUR DATE**

Please contact Rachelle Appleton at (401) 380-1921  
or [rappleton@newporthotelgroup.com](mailto:rappleton@newporthotelgroup.com).

The Hotel is in the Heart of Downtown, Surrounded by Restaurants and Shops,  
and is Connected to the Spectacular Scenic East Bay Bike Path





## **CATERING**

We offer on-site professional catering for your special day. We look forward to discussing menu options with you.



## **GUEST ROOMS**

One benefit of hosting your event at the Waterfront Pavilion at Bristol Harbor is the ability to stay where you celebrate! The Bristol Harbor Inn offers 41 guest rooms and 15 suites.

# RENTAL FEES

## WATERFRONT PAVILION



### CAPACITY

*Ceremony: 220*

*Cocktail Reception: 300*

*Buffet Dinner: 180*

*Plated Dinner: 220*

*From Memorial Day Weekend to Columbus Day, managed parking is included in the rental fee. For details and upgrade options, please contact the sales office.*

### Memorial Day Weekend – Columbus Day Weekend

Friday ..... \$7,500

Saturday ..... \$10,500

Sunday ..... \$6,000

Monday–Thursday ..... \$3,750

*Sundays of Holiday Weekends Default to Saturday Pricing*

### Pre-Memorial Day Weekend & Post-Columbus Day Weekend

Friday ..... \$5,000

Saturday ..... \$7,000

Sunday–Thursday ..... \$4,000

## BRISTOL HARBOR ROOM



### CAPACITY

*Ceremony: 150*

*Cocktail Reception: 150*

*Buffet Dinner: 100*

*Plated Dinner: 120*

### Memorial Day Weekend – Columbus Day Weekend

Friday ..... \$3,000

Saturday ..... \$4,500

Sunday ..... \$2,500

Monday–Thursday ..... \$2,000

*Sundays of Holiday Weekends Default to Saturday Pricing*

### Post Columbus Day Weekend – Pre Memorial Day Weekend

Friday ..... \$2,000

Saturday ..... \$3,000

Sunday–Thursday ..... \$1,500

## EVENT LOUNGE



An additional way to enhance your day at Bristol Harbor Inn is with our private Event Lounge. Just steps from the Waterfront Pavilion, the room is spacious and bright, creating the perfect setting for special moments for you, your bridal party and family. The room features an oversized bathroom, two full-length mirrors, a farmhouse table with six seats and a beauty bar with two stools.



## Accommodations

- 56 Guestrooms and suites reflect the coastal beauty and historic charm of Bristol. Each guest room features nautically-inspired décor, accented by soothing blues and earth tones, custom designed furnishings, and limited-edition photography.
- *41 Deluxe Guestrooms*
- *9 Studio Suites with Kitchenettes*
- *6 One and Two-Bedroom Suites with Full Kitchens*

## Event Facilities

- Waterfront Pavillion, the ideal setting for weddings and social gatherings, perched out on a waterfront dock with 180° views of Narragansett Bay.
- Bristol Harbor Room located in the 200-year-old DeWolf building, with its stone walls and exposed beam ceiling.
- Diman Room and adjacent Boardroom offer more space for meetings and functions.
- Event Lounge, a bright room with the perfect setting for your special occasion.

## Amenities

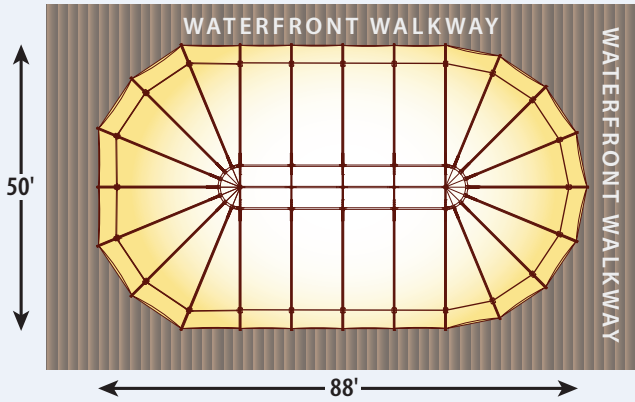
- Located at Bristol Harbor Landing with numerous restaurants and shops.
- Micro-Spa with Treatment Room.
- Fitness Room with views of Narragansett Bay.
- On-Site Transient Marina.
- Adjacent to the renowned East Bay Bike Path with Bike Rentals.





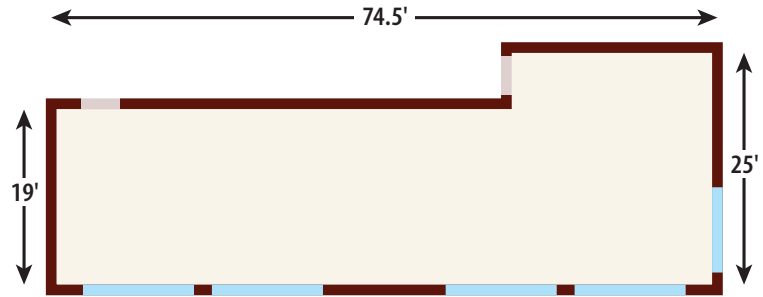
### Waterfront Pavillion 4,400 sf

Ceremony: 220      Buffet Dinner: 180  
 Cocktail Reception: 300      Plated Dinner: 220



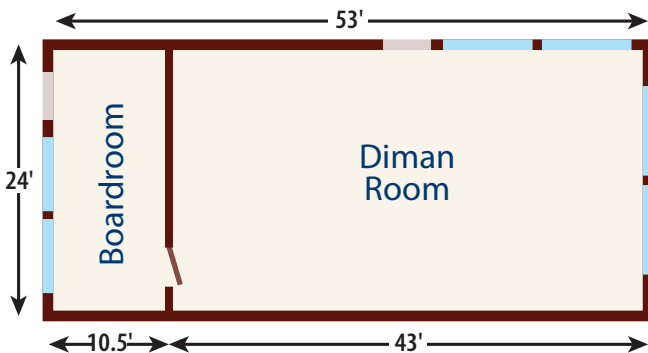
### Bristol Harbor Room 1,600 sf

Ceremony: 150      Buffet Dinner: 100  
 Cocktail Reception: 150      Plated Dinner: 120

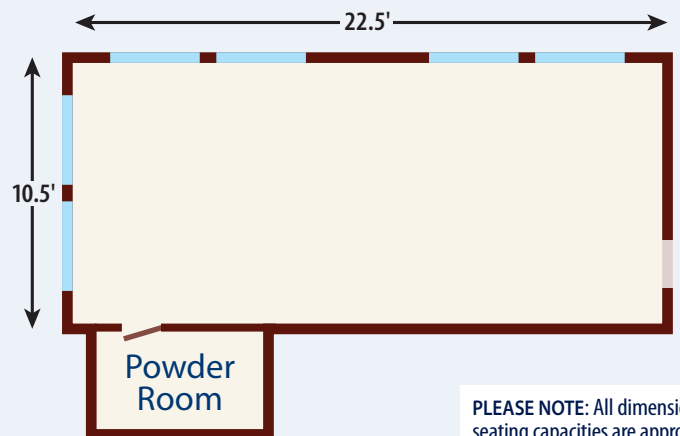


### Diman Room 1,030 sf Boardroom 250 sf

Cocktail Reception: 80      Buffet Dinner: 50  
 Plated Dinner: 60



### Event Lounge 300 sf



PLEASE NOTE: All dimensions and seating capacities are approximate.



---

## Bristol Harbor Inn

---

Experience our waterfront boutique hotel in downtown Bristol, Rhode Island. Overlooking Bristol Harbor and Narragansett Bay, our charming inn is situated among many unique shops, restaurants, bars and area nightlife. We are just steps from the East Bay Bike Path, a 14.5 mile paved trail along the scenic shoreline of Narragansett Bay. Enjoy biking, boating, fishing, historic sites and picnics at beautiful Colt State Park. **Discover authentic New England charm and character at the Bristol Harbor Inn.**

259 Thames Street, Bristol, Rhode Island 02809 • [www.bristolharborinn.com](http://www.bristolharborinn.com)  
PHONE (401) 254-1444 • FAX (401) 254-1333 • EMAIL: [info@bristolharborinn.com](mailto:info@bristolharborinn.com)