



Your Day Your Way

Package includes:

➤ Reception Hall

- Capacity of 0-300 guest count
- Event Coordination - **Prior Event Planning Meeting, Guided Rehearsal, & Day of Coordinator**
- 14 Hour Rental (10:00am – Midnight)
- Full Access to all 12 Acres (**only event that day**)
- 6' Diameter wood Dinner Tables (*comfortably seats 8 up to 12 guests at each table*)
- White Chivari Chairs
- 15' Wooden Stage w/ Light Curtain (perfect for Sweetheart Table, Cake Tables, Live Music or DJ)
- Full room specialty color wall up lights (**set to your wedding colors**)
- Projector & 100" power drop down screen
- Full-Service Bar
 - ♥ Beautiful 12' Granite tops (*space for everything*)
 - ♥ Full Size Ice Machine
 - ♥ Mini Refrigerator for Fruits, Mixers, Specialty Items
 - ♥ Oversized Sink

Open Vendor Policy
w/ NO hidden fees

➤ Large Caterer's Kitchen

- Private Entrance (*and exit so no walking through the venue during your event when they leave*)
- 2 Full Size Ice Machines
- 2 Full size refrigerators
- Multiple Stainless Steel Prep tables
- Separate Kitchen Area



➤ Atrium Room

- Designated room for receiving your guests prior to ceremony time or hosting Cocktail Hour after
- Walls of Full-Size Glass Sliding Doors (*views of ceremony site, full sky sunsets, creek & bridge*)
 - ♥ Slide them all open for a beautiful Spring or Fall experience!
- Perfect for Photobooth Location
- White Stone Gas Fireplace w/floor to ceiling white drapes
- Optional Indoor Ceremony Room w/ seating for up to 200 guests (*no walking guests through the weather from building to building*) & Sound System



➤ Wedding Party House (*More than a bride's & Groom's room – **it's a whole house***)

- ***Glamorous Bride's Lounge***
 - ♥ Full bath (Separate shower, double vanity, mouthwash, 2 walk-in closets (*store all those bags, changes of clothes, etc. – out of those getting ready photos w/ your girls*))
 - ♥ Commercial Stand Steamer for Dresses
 - ♥ 2 full size sofas
 - ♥ Private Beverage Room w/ full size refrigerator
 - ♥ Alexa Sound System (*tell her to play any type of music you want*)
 - ♥ Full Size Dressing Mirror, Bar Cart, Specialty Lighting, & 2 extra-large white barn doors w/ places to hang bride's maid's dresses for photos



- **Hair & Makeup Room**

- ♥ Designated room w/ large counter tops, adjustable height seats, lighted makeup mirrors, tons of natural lighting
- ♥ Perfect if hiring professionals or doing it yourself



- **Mom's Suite**

- ♥ Designated room for mothers, grandmothers, flower girls
- ♥ Large counter tops w/ full size mirrors
- ♥ Full closet for dresses, bags, etc.
- ♥ Full size Dressing Mirror
- ♥ Lounge Seating

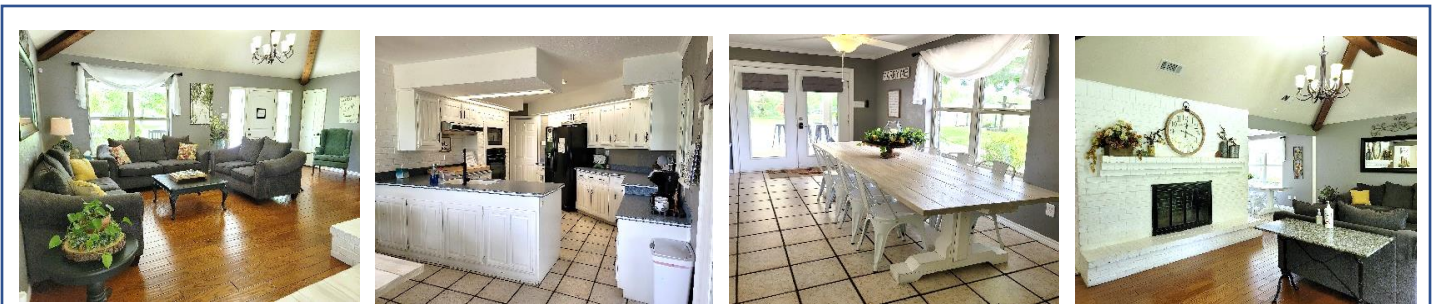
- **Living Room** w/ 3 sofas, tables, Fireplace, Alexa Sound System

- **Kitchen** w/ full size refrigerator, oven, microwave, coffee bar, LOTS of countertop space for food

- **Dinning Area** w/ 10' Farm Table and seating for 8

- **Groom's Lounge**

- ♥ 2 Large Sofas
- ♥ Flat Screen TV w/ Dishnet (on articulating arm for personal gaming systems)
- ♥ Full size Pool Table
- ♥ Wet Bar Area
- ♥ Kitchen Area w/ Full Refrigerator, Microwave, Dining Table
- ♥ Private Restroom
- ♥ Locker Room w/ 8 custom wood lockers, oversized Walk in Shower, Double Vanity, Mouthwash, Iron & Ironing board
- ♥ Outside Covered porch with lots of lounge seating, 2 Cocktail Tables & Chairs, and Corn Hole game

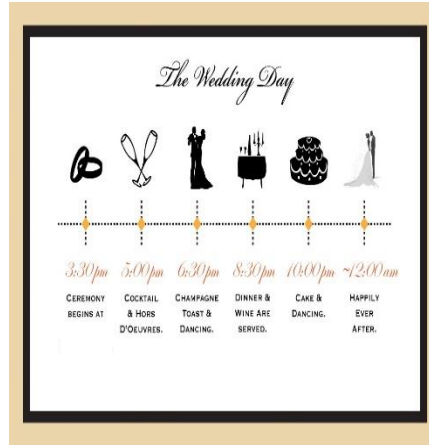


Additional Included Items

Event Coordination

Prior to Event:

Planning assistance from our inhouse planner from day one which includes an in-person meeting with her to create your timeline, floor plan design & go over every important detail



Day of Event:

A Day of Event Coordinator to help ensure everything you put together with the office planner goes as smoothly as possible

Glass Vases (Multiple quantities of each style)





*Glass Lanterns

*6' Tall Iron Sheppard Hooks

Use lanterns as a table centerpiece or with the Sheppard hooks



Easels

perfect for portraits or signs



BRONZE



WHITE



TEXAS



Insulated
Drink Buckets
(Qty 4)



Silver Unity Table

Choice of Ceremony Location

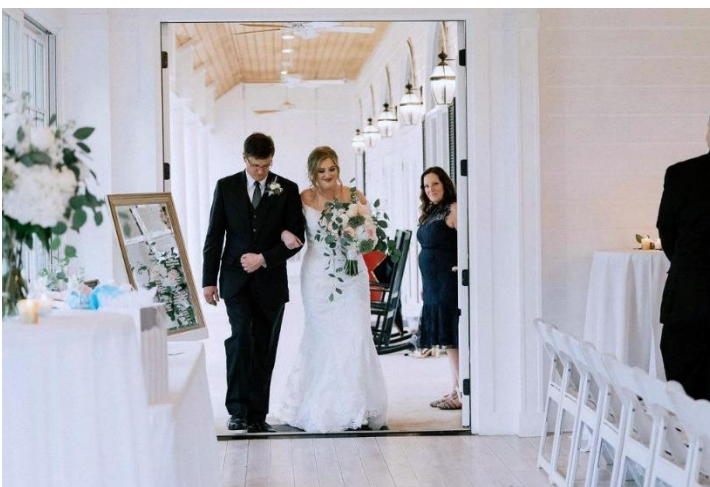


White Chapel Gazebo

- ♥ Full Sound System w/ hidden speakers & lapel mic for the officiant
- ♥ Solid Cobblestone under Custom Garden Benches
- ♥ Wheelchair accessible – no steps or grass

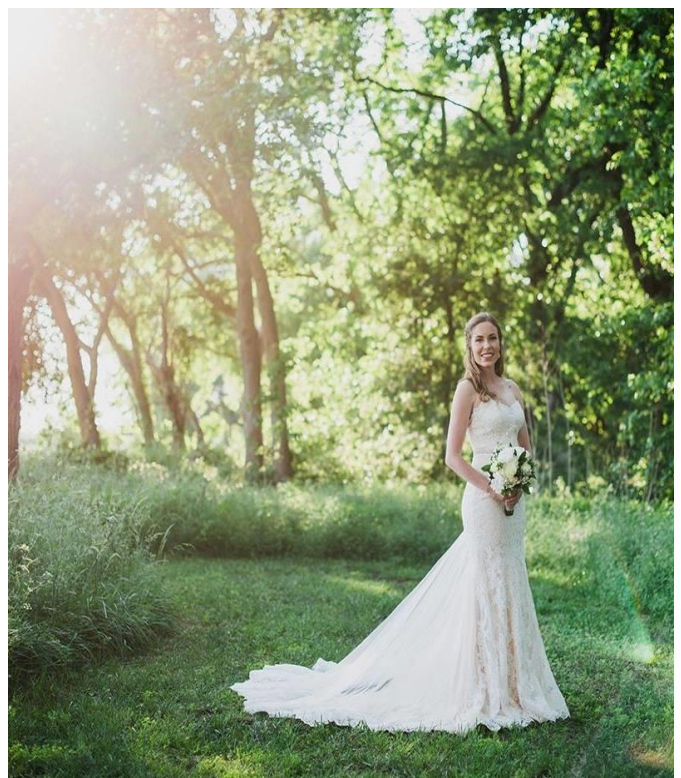


Inside Atrium Room

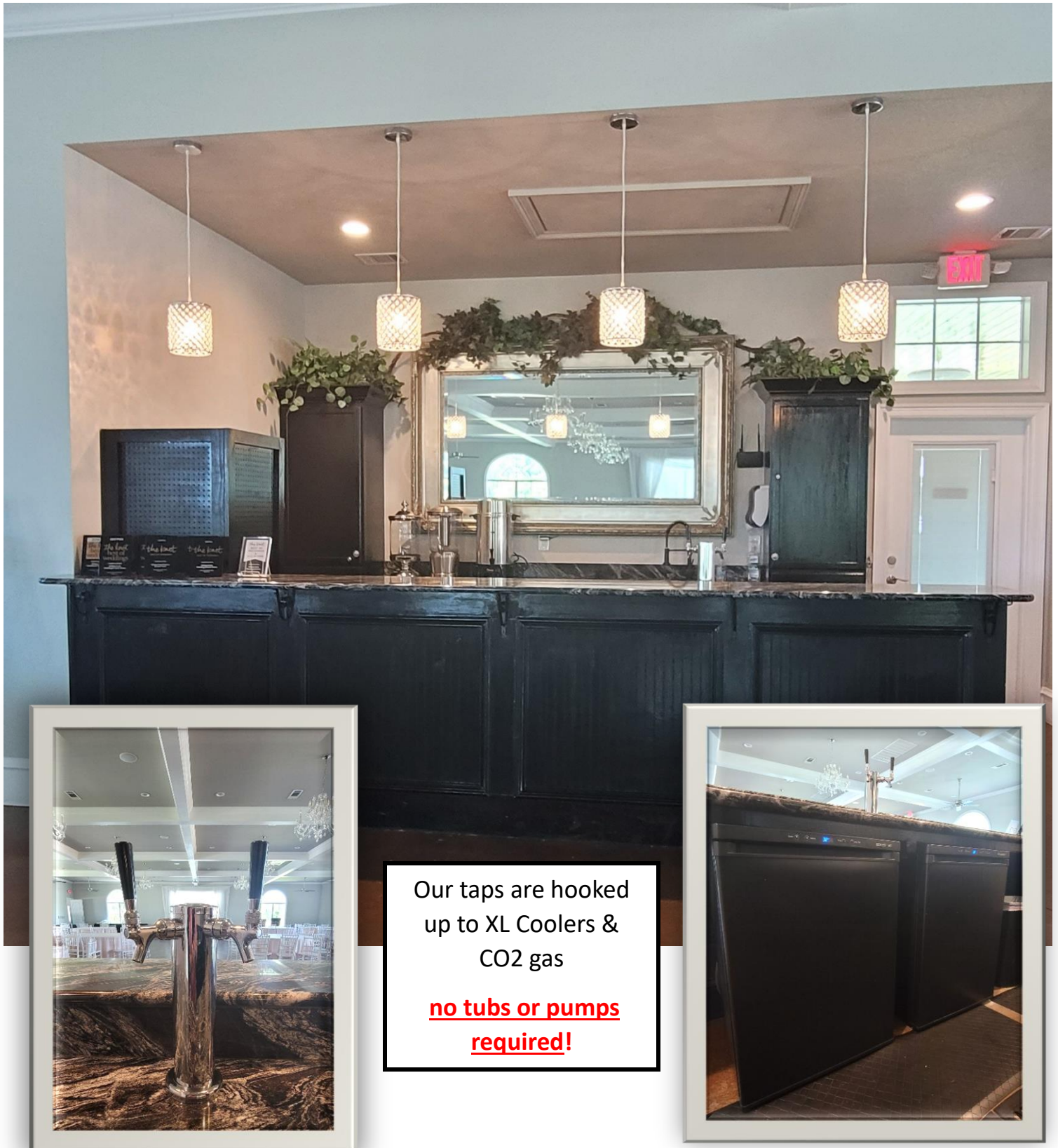


- ♥ Choice of setup/backdrop – use the stone fireplace w/ floor length white drapes or turn your seating to face the full wall of windows facing the Gazebo and Sunset
- ♥ Walls of large sliding floor to ceiling French doors
- ♥ Sound System included

Unlimited Access to the Property for Photos
(Save the Dates, Engagements, Bridals)



12' Full-Service Granite Bar w/ commercial grade, double beer taps system



Our taps are hooked
up to XL Coolers &
CO2 gas

no tubs or pumps
required!

Specialty Lighting throughout the Property



Coordinating wedding colors inside the reception hall

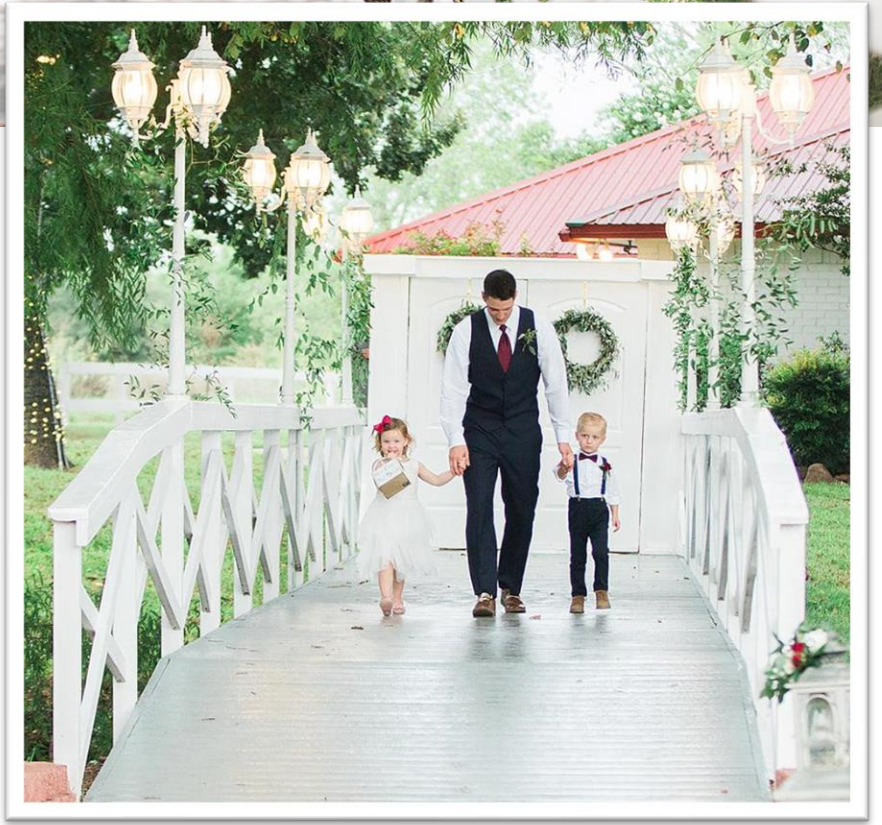
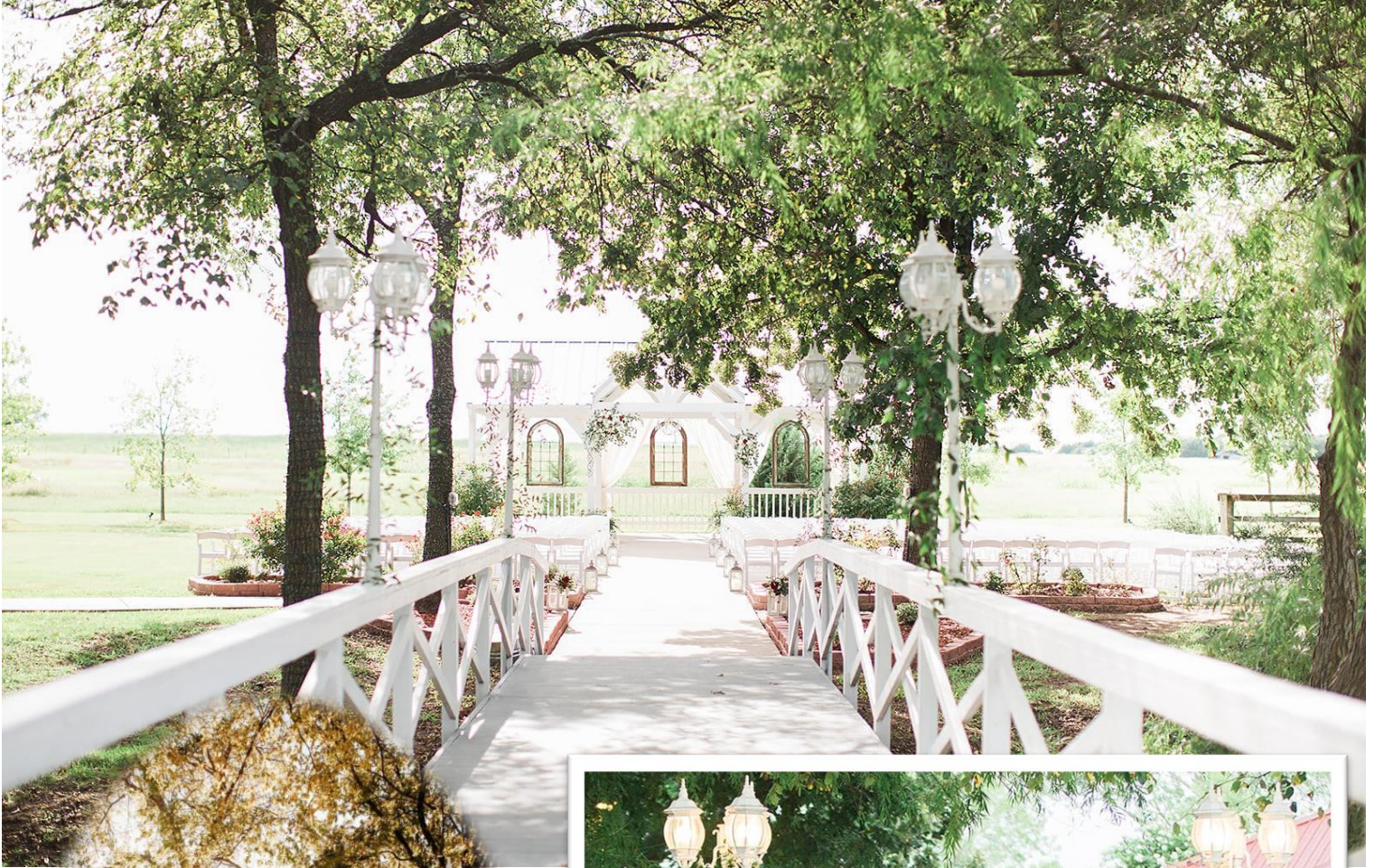
Bridge Carriage Lights



Café String Lights



**80' Long, Tree Lined
Wooden Bridge w/ Carriage Lights**
Such a Unique Ceremony Walkway



Choice of Exit Locations / Types



Venue Front Door



*Across The
Bridge*



Pricing

0-200

Venue Rental Fee

Prices good for 30 days and are subject to change

Peak Season		Non-Peak Season	
<i>March-Nov (excluding July & Aug)</i>		<i>Dec-Feb, July & Aug</i>	
Mon-Thur	\$4500	Mon-Thur	\$3500
Sunday	\$6000	Sunday	\$5000
Friday	\$6500	Friday	\$5500
Saturday	\$7500	Saturday	\$6500

201-250 + \$450

251-300 + \$800

Alcohol Policy

*Add on Required if Serving Alcohol
Neither Required if NOT Serving Alcohol*

Bartender (5 hrs of Service) \$225

** Included in Premium Package*

Security Officer (5 hrs Service) \$225

** Included in Premium Package*

*All Bartenders and Security come through Willow Creek only

*Weddings of 201-300 require an additional Bartender & Security at \$225 ea.

Number of Bartenders & Security Is dependent on guest count and Bar menu

Day of Insurance

We require a Limited Liability Insurance Policy up to \$1M for the day of the event

Approximate cost is \$125 with an Alcohol rider and \$90 without Alcohol

**Included in Premium Package*

Initial booking payment is 25% of Venue Rental Fee selected



Premium Pricing

Includes, Bartenders, Security, Insurance
Table Linens, Linen Napkins, Bar Betty

Venue Rental Fee			
<i>Prices good for 30 days and are subject to change</i>			
Peak Season		Non-Peak Season	
<i>March-Nov (excluding July & Aug)</i>		<i>Dec-Feb, July & Aug</i>	
Mon-Thur	\$6300	Mon-Thur	\$5800
Sunday	\$7500	Sunday	\$7000
Friday	\$7950	Friday	\$7450
Saturday	\$8950	Saturday	\$8450
<i>201-250 + \$450</i>		<i>251-300 + \$800</i>	

Initial booking payment is 25% of Venue Rental Fee selected