

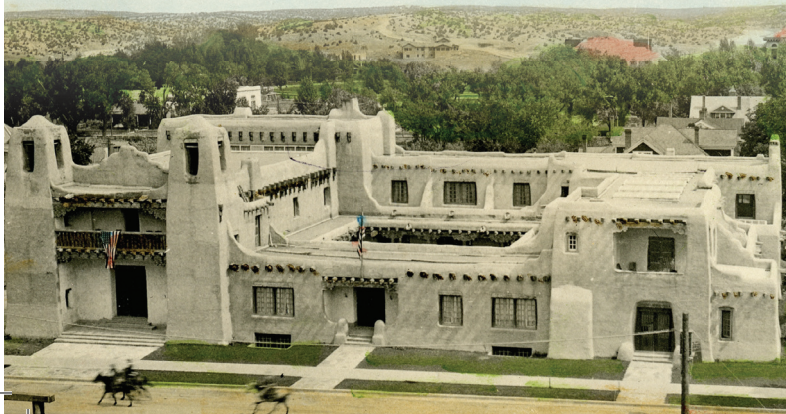


Courtesy Kerry Sherck Photography

Have your guests experience the ultimate New Mexico has to offer in charm, beauty, and authenticity by holding your special event at the New Mexico Museum of Art.

Built in 1917, the New Mexico Museum of Art is admired for its New Mexico Pueblo Revival style architecture and is listed as a national historic landmark. Experience something different in the “City Different” for your wedding, reception, corporate event, lecture, or concert.

Competitive and affordable rental fees, with a wide choice of catering options from our approved caterer’s list.



Rent the entire Museum for \$5000

Receive a 10% discount for 3 or more spaces rented.

#### **ADDITIONAL FEES**

Museum security: \$30/hour per security guard.  
Minimum 3 guards; maximum 5 depending upon the type of event.

Private Shopping at the Museum of NM  
Foundation Shop \$25/hour after 5:00 pm,  
2 hour minimum.

#### **SPECIAL CONSIDERATIONS WHEN PLANNING YOUR EVENT:**

Event Times  
November–April after 5:30 pm

Available after 7:30 PM every 1st Friday of the month from November–April.

Available after 7:30 PM  
Friday nights from May–October

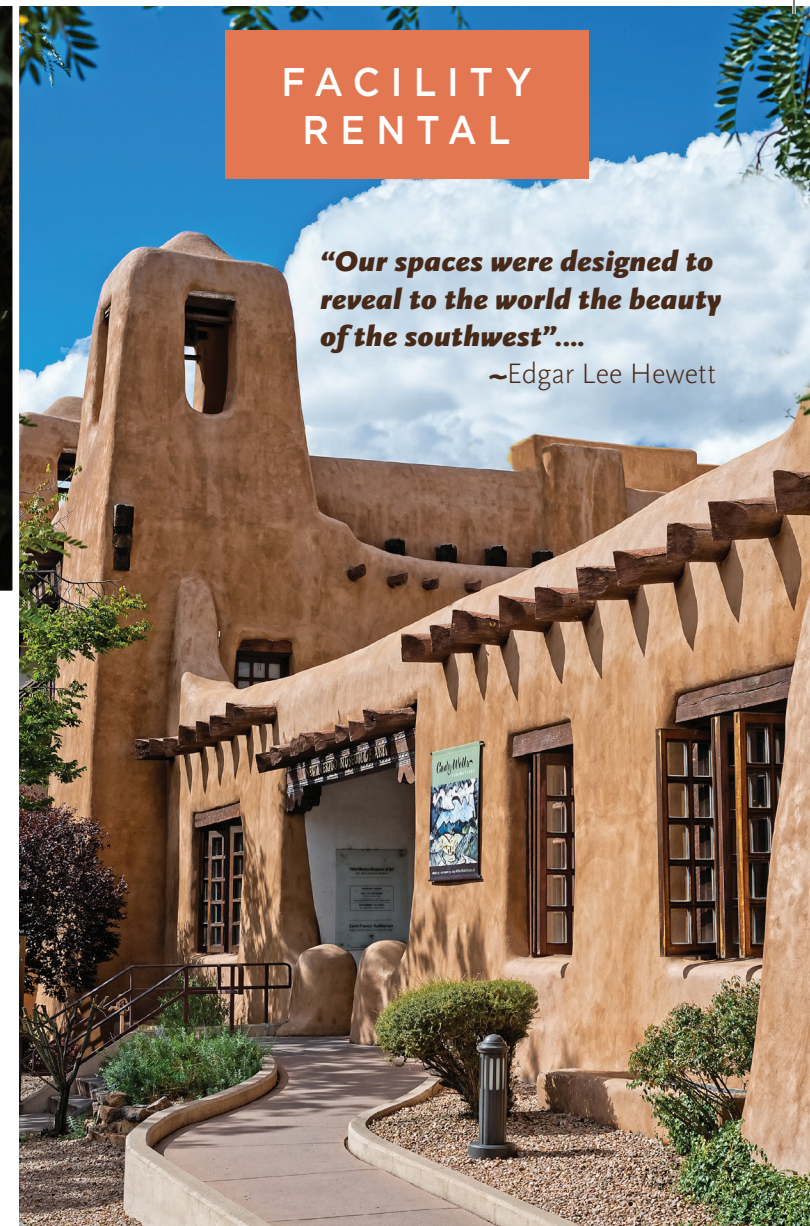
#### **CONTACT INFORMATION**

Charlene Carroll, Events Manager  
charlene.carroll@state.nm.us • 505-476-5056

## **FACILITY RENTAL**

*“Our spaces were designed to reveal to the world the beauty of the southwest”....*

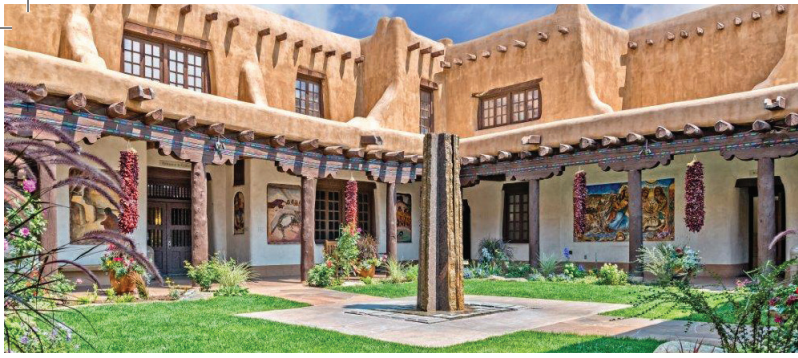
~Edgar Lee Hewett



Set in the heart of the 400-year old Santa Fe Plaza, the New Mexico Museum of Art stirs the imagination: an enchanting wedding or cocktail reception in a courtyard garden full of flowers, an awards ceremony in a stately boardroom, or a concert in an auditorium steeped in art, history and tradition.

**New Mexico Museum of Art**





## COURTYARD AND LOBBY

The **Mountain Fountain** sculpture by artist Jesús Morales sits at the center of our elegant courtyard, surrounded by grass and plants lovingly maintained by the Santa Fe Garden Club. The covered portals shade paintings by Will Shuster and Frederico Vigil, demonstrating the cultural diversity of New Mexico. This space is perfect for small weddings, receptions, dinner and dancing to live or DJ'd music. The Lobby is usually rented with this venue for additional space. Authentic hard-carved vigas, decorative kiva fireplace, tin chandeliers, classic New Mexican wooden furniture and a latilla ceiling decorate this charming space.

Courtyard with fountain: capacity 125. Rental fee: \$750.

Lobby: capacity 75. Rental fee \$650



## O'SHAUGHNESSY OR WEST SCULPTURE GARDENS

O'Shaughnessy sculpture garden evokes a feeling of a calm oasis.

West sculpture garden contains traditional and contemporary sculpture encircled by adobe walls.

Both spaces work well for meetings, small receptions and weddings.

Capacity 75. Rental fee: \$650 each



## GALLERIES

Before the festivities begin or after your event, your guests can enjoy our rotating exhibits.



Clarke and Goodwin Galleries offer over 3,500 square feet of space.

Rental Fee: \$650.00

New Wing over 4,000 square feet of space.

Rental Fee: \$790.00

If you are looking to have a small lecture or private meeting for up to 50 we suggest the Women's Boardroom, Roland & Beauregard Galleries with over 3,300 square feet of space.

Rental Fee: \$600.00



## ST. FRANCIS AUDITORIUM

St. Francis Auditorium serves as one of Santa Fe's premier performance halls. It is a perfect venue for events from weddings to concerts to lectures. The McNary pipe organ stands majestically amid a series of murals depicting Saint Francis of Assisi, the patron saint of Santa Fe.



Wooden, church-like pews complement this historic hall. St. Francis Auditorium is ideal for weddings, concerts, lectures, recitals or meetings. The great acoustics in this space are due to the woodwork and irregular stucco surfaces of the walls.

Capacity 450. Rental fee: \$1000



Courtesy Kerry Sherck Photography