



# NEVERMORE PRIVATE EVENT PRICING

## NEVERMORE PRIVATE EVENT PRICING

THE NON-REFUNDABLE RENTAL FEE SERVES AS THE DEPOSIT FOR THE EVENT. DEPOSITS TO RESERVE ANY OF OUR SPACES ARE DUE WITHIN 7 DAYS OF INVOICING. FOOD & BEVERAGE SELECTIONS ARE DUE 14 DAYS PRIOR TO THE EVENT, UNLESS GUESTS WILL BE ORDERING INDIVIDUALLY FROM OUR STANDARD MENU. ANY OUTSTANDING BALANCES MUST BE SETTLED 7 DAYS PRIOR TO THE EVENT DATE.

YOU MAY BRING IN ANY DESSERT FROM A LICENSED BAKER. DECORATIONS ARE WELCOME! WE ASK THAT YOU DO NOT TAPE ANYTHING TO WALLS OR PAINTED SURFACES. PLEASE, NO GLITTER OR CONFETTI. THE ONLY VENDORS THAT WE REQUIRE TO BE IN HOUSE ARE THE FOOD AND BEVERAGE, EXCLUDING DESSERT. WE DO ALLOW OPEN FLAME CANDLES, BUT THEY MUST BE CONTAINED IN SOME FORM OF GLASSWARE, VOTIVE, HURRICANE, VASE, ETC.

YOU CAN USE ANY AUDIOVISUAL EQUIPMENT THAT WE HAVE ON SITE COMPLIMENTARY WITH YOUR RENTAL. WE ASK THAT YOU PLEASE TAKE CARE OF THIS EQUIPMENT, AS THERE WILL BE ADDITIONAL CHARGES FOR ANYTHING THAT IS LOST, STOLEN, OR DAMAGED DURING YOUR EVENT.

FOR GROUPS LARGER THAN 15 GUESTS- AN AUTOMATIC 20% SERVICE CHARGE WILL BE ADDED TO THE PRIMARY ACCOUNT BALANCE. THIS SERVICE CHARGE DOES NOT INCLUDE GRATUITY FOR BAR SALES OR TO INDIVIDUAL TABS. BAR SALES MAY BE INDIVIDUAL TABS. WE ARE FAMILY FRIENDLY UNTIL 10PM DAILY. STARTING AT 10PM, ALL GUESTS NEED TO BE 21 YEARS OLD OR OLDER. DOORS OPEN TO VENDORS AND CLIENTS 30 MINUTES PRIOR TO AND AFTER THEIR EVENT START TIME IF RENTING 1 SPACE, 60 MINS IF RENTING 2-3 SPACES, AND 4 HOURS IF RENTING 4 OR MORE SPACES.

COMPLIMENTARY TASTINGS ARE AVAILABLE FOR EVENTS REACHING \$10,000 OR MORE PRE TAX. TASTINGS WILL INCLUDE YOUR CHOICE OF 2 SALADS, 3 ENTREES, AND 5 SIDES. OR IF OPTING FOR HEAVY APPS, BREAKFAST BARS, ETC. WE INCLUDE YOUR CHOICE OF 6 APPETIZERS/ LIGHT ENTREES.

**FIND OUR MAIN ENTRANCE LOCATED OFF OF SOUTH MERIDIAN ST. AT THE  
UNION STATION BRIDGE**



## **FOOD AND BEVERAGE MINIMUMS:**

**MONDAY - SUNDAY:**  
**\$19 PER GUEST < 35 GUESTS**  
**\$22 PER GUEST 35-70 GUESTS**  
**\$25 PER GUEST 71+ GUESTS**

**FRIDAY - SATURDAY:**  
**\$36 PER GUEST**

## **BEVERAGE PACKAGES:**

**EACH PACKAGE WORKS IN A TIER SYSTEM, AND INCLUDES ALL BEVERAGE OPTIONS FROM LOWER PACKAGES. PRICING INCLUDES BAR SERVICE FOR UP TO 4 HOURS. THE HARMODIUS (SODA, WATER, COFFEE, AND NON-ALCOHOLIC PACKAGE) IS RECOMMENDED AS A MINIMUM FOR ALL EVENTS WITH GUEST COUNTS EXCEEDING 25 ATTENDEES- NOT INCLUDING CHILDREN UNDER THE AGE OF 4. SHOTS ARE PERMITTED DEPENDING ON CLIENT REQUEST.**

**\$33 P.P. -THE STYLUS: TOP SHELF- OPEN BAR**  
**\$28 P.P. -THE BOSTONIAN: CALL LEVEL LIQUOR, HOUSE BEER & WINE SELECTIONS**  
**\$16 P.P. -THE TAMERLANE: HOUSE BEER & WINE SELECTIONS**  
**\$6 P.P. -THE HARMODIUS: SODA, WATER, COFFEE, AND NON-ALCOHOLIC BEVERAGES**  
**\$3 P.P. - SPECIALTY COCKTAILS, BAR SUBSTITUTIONS, OR CHAMPAGNE TOAST**  
**\*SUBJECT TO AVAILABILITY- PRICING MAY VARY DEPENDING ON REQUEST\***

## **DRINK TICKET PRICING:**

**\$12 P.T. - TOP SHELF (OPEN BAR)**  
**\$9 P.T. - CALL LEVEL LIQUOR**  
**\$6 P.T. - HOUSE BEER OR WINE SELECTIONS**  
**\$3 P.T. - NON-ALCOHOLIC BEVERAGES**



## **THE LONDONER COCKTAIL ROOM:**

**SUN-THU: \$100 PER HOUR - \$325 FOR 4 HOUR BLOCK  
FRI-SAT: \$250 PER HOUR - \$825 FOR 4 HOUR BLOCK**

**A NOD TO AN UPSCALE BRITISH TRAIN CAR, THIS HIGH END LOUNGE BOASTS MANY OF OUR TOP SHELF SPIRITS AS WELL AS A SENSE OF SECLUSION AND ELEGANCE. PERFECT FOR AN INTIMATE GATHERING, THE EUROPEAN VIBE LENDS ITSELF WELL FOR PRIVATE PARTIES, VIP EXPERIENCES, OR SOCIAL MIXERS.**

**MAX CAPACITY- STANDING ROOM: 50  
MAX CAPACITY- SEATED/ BANQUET: 20  
# OF BARS: 1  
BAR OFFERINGS: TOP SHELF SPIRITS  
TVS: 3 TVS W/ CABLE AND HDMI HOOKUP  
ADDITIONAL AV: N/A**



## **THE TEA PARLOR CONFERENCE ROOM:**

**SUN-THU: \$75 PER HOUR - \$250 FOR 4 HOUR BLOCK  
FRI-SAT: \$190 PER HOUR - \$600 FOR 4 HOUR BLOCK**

**A BESPOKE SPACE THAT WELCOMES YOU AND PROVIDES A WARM AND BRIGHT WORKPLACE OR GET-TOGETHER. PERFECT FOR BABY SHOWERS, BRIDAL SHOWERS, OR CORPORATE CONFERENCES, MANY GUESTS ENJOY UTILIZING THIS ROOM IN CONJUNCTION WITH OUR LONDONER COCKTAIL ROOM.**

**MAX CAPACITY- STANDING ROOM: 25  
MAX CAPACITY- SEATED/ BANQUET: 15  
# OF BARS: 0  
BAR OFFERINGS: N/A  
TVS: 1 TV W/ CABLE AND HDMI HOOKUP  
ADDITIONAL AV: N/A**



## THE STUDY LOUNGE:

SUN-THU: \$75 PER HOUR - \$250 FOR 4 HOUR BLOCK  
FRI-SAT: \$190 PER HOUR - \$600 FOR 4 HOUR BLOCK

ADJACENT TO OUR WYRMWOOD LOUNGE, SITS A COZY AND DIGNIFIED LIBRARY AND STUDY ROOM. GUESTS CAN FIND COMFORTABLE COUCHES AND LEATHER CHAIRS TO SETTLE INTO FOR A ROUND OF DRINKS, GAMES, OR GROUP ACTIVITIES. IT PAYS HOMAGE TO THE CLASSIC STUDY FROM GENERATIONS PAST.

MAX CAPACITY- STANDING ROOM: 40  
MAX CAPACITY- SEATED/ BANQUET: 20  
# OF BARS: 0  
BAR OFFERINGS: N/A  
TVS: N/A

ADDITIONAL AV: ELECTRIC FIREPLACE W/ HEATER



## THE WYRMWOOD PUB:

SUN-THU: \$150 PER HOUR - \$375 FOR 4 HOUR BLOCK  
FRI-SAT: \$375 PER HOUR - \$1200 FOR 4 HOUR BLOCK

FEATURING OUR LARGEST BAR AND ACTING AS THE HEART OF OUR VENUE OFFERINGS, THE WYRMWOOD LOUNGE FEATURES A FANTASTIC DINING EXPERIENCE, WITH PLENTY OF ENTERTAINMENT OPTIONS. GUESTS CAN EXPECT A UNIQUE BAR EXPERIENCE, WITH FAMILIAR FAVORITES BOTH IN THE KITCHEN AND BEHIND THE BAR.

MAX CAPACITY- STANDING ROOM: 100  
MAX CAPACITY- SEATED/ BANQUET: 50 BOOTH AND TABLE SEATS- 24 BAR SEATING  
# OF BARS: 1 HORSESHOE BAR  
BAR OFFERINGS: CALL LEVEL LIQUOR  
TVS: 4 TVS (2 TVS W/ CABLE AND HDMI HOOKUP - 2 TVS W/ HDMI HOOKUP ONLY)  
ADDITIONAL AV:  
4K PROJECTOR & SCREEN





## **THE FRONTIER BANQUET HALL:**

**SUN-THU: \$150 PER HOUR - \$375 FOR 4 HOUR BLOCK**  
**FRI-SAT: \$375 PER HOUR - \$1200 FOR 4 HOUR BLOCK**

**A DINING HALL THAT TRULY RIVALS THAT OF GOTHIC CASTLE, THE FRONTIER ROOM IS SURE TO IMPRESS AND AMAZE. WITH A SMALL STAGE, POISED FOR PRESENTATIONS AND PERFORMANCES ALIKE, AND GRANDIOSE 10 FOOT SOLID OAK TABLES; UNFORGETTABLE AWARD CEREMONIES, AUSPICIOUS GALAS, AND VIBRANT CONCERTS FIND THEMSELVES AT HOME IN THIS SPACE.**

**MAX CAPACITY- STANDING ROOM: 200**  
**MAX CAPACITY- SEATED/ BANQUET: 140**  
**# OF BARS: 1**

**BAR OFFERINGS: CALL LEVEL LIQUOR**  
**TVS: 6 TVS (3 TVS W/ CABLE AND HDMI HOOKUP - 3 TVS W/ HDMI HOOKUP ONLY)**

**ADDITIONAL AV:**  
**4K PROJECTOR & SCREEN**  
**1FT TALL STAGE W/ SMALL LIGHT STRIP AND MINI SPOTLIGHT BAR**  
**2 MID LEVEL SPEAKERS**  
**2 BASS SPEAKERS**  
**2 CORDED MICROPHONES**



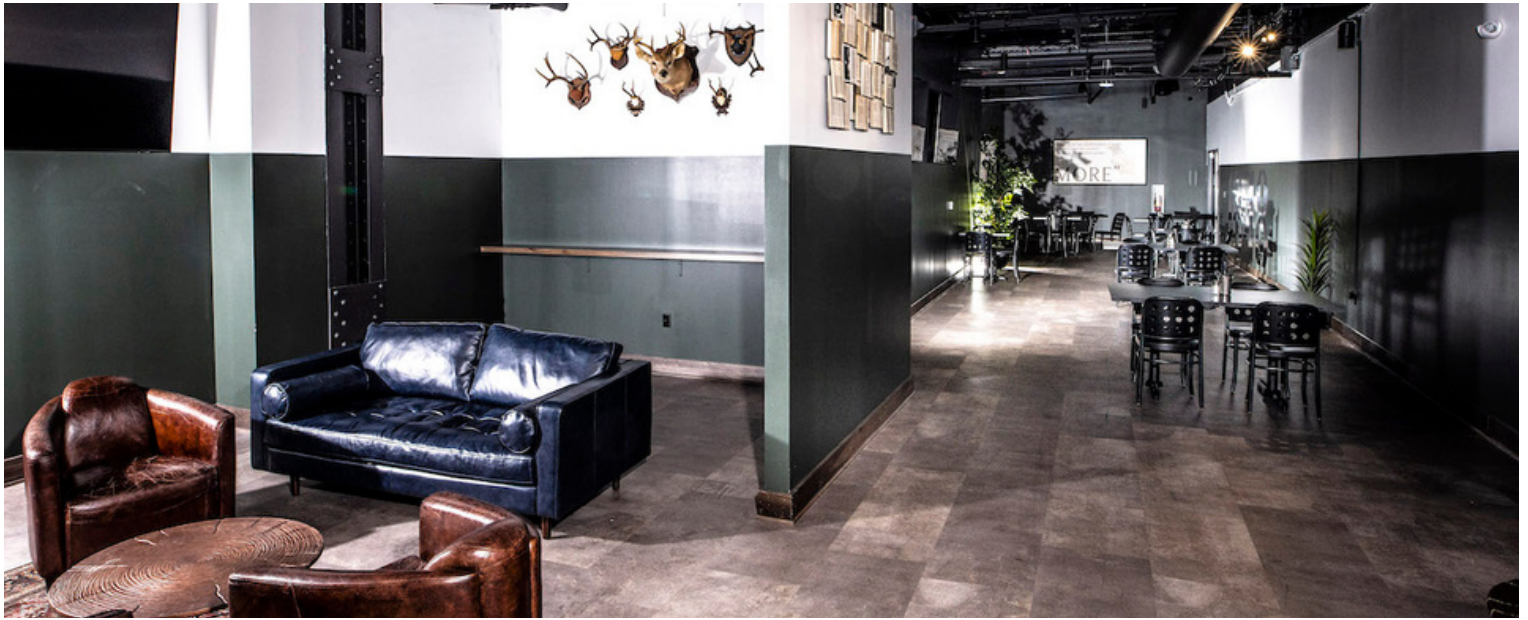
## **THE MAN CAVE/ LOUNGE:**

**SUN-THU: \$50 PER HOUR - \$160 FOR 4 HOUR BLOCK**  
**FRI-SAT: \$125 PER HOUR - \$400 FOR 4 HOUR BLOCK**

**BRIMMING WITH BRAVADO AND STRIKING DECOR, THIS HANGOUT NESTLED JUST BEHIND THE WYRMWOOD LOUNGE IS DESIGNED WITH MASCULINITY IN MIND. HERE YOU WILL FIND AMPLE SPACES FOR YOUR WEEKLY GAME NIGHTS, BUSINESS OUTINGS, AND BACHELOR PARTIES.**

**MAX CAPACITY- STANDING ROOM: 100**  
**MAX CAPACITY- SEATED/ BANQUET: 60**  
**# OF BARS: N/A**

**BAR OFFERINGS: N/A**  
**TVS: 6 TVS (3 TVS W/ CABLE AND HDMI HOOKUP - 3 TVS W/ HDMI HOOKUP ONLY)**  
**ADDITIONAL AV: N/A**



## **THE GAME ROOM & PATIO:**

**SUN-THU: \$150 PER HOUR - \$375 FOR 4 HOUR BLOCK  
FRI-SAT: \$375 PER HOUR - \$1200 FOR 4 HOUR BLOCK**

**GREAT TIMES AWAIT YOUR GUESTS IN OUR FUN-FILLED GAME ROOM AND PATIO! WITH 6 LANES OF DUCKPIN BOWLING, 2 POOL TABLES, SHUFFLEBOARD, VINTAGE GAMES, AND OUR LARGEST SELECTION OF BEERS ON DRAFT- THERE'S PLENTY TO KEEP FRIENDS AND FAMILY HAVING FUN FOR HOURS ON END. AND WHEN IT'S TIME TO TAKE A BREAK FROM THE ACTION, STEP OUTSIDE AND ENJOY A PRIVATE PATIO AND FIREPIT.**

## **INDOOR GAME ROOM:**

**MAX CAPACITY- STANDING ROOM: 60**

**MAX CAPACITY- SEATED/ BANQUET: 26 HIGH TOP TABLE SEATS- 9 BAR SEATING  
# OF BARS: 1**

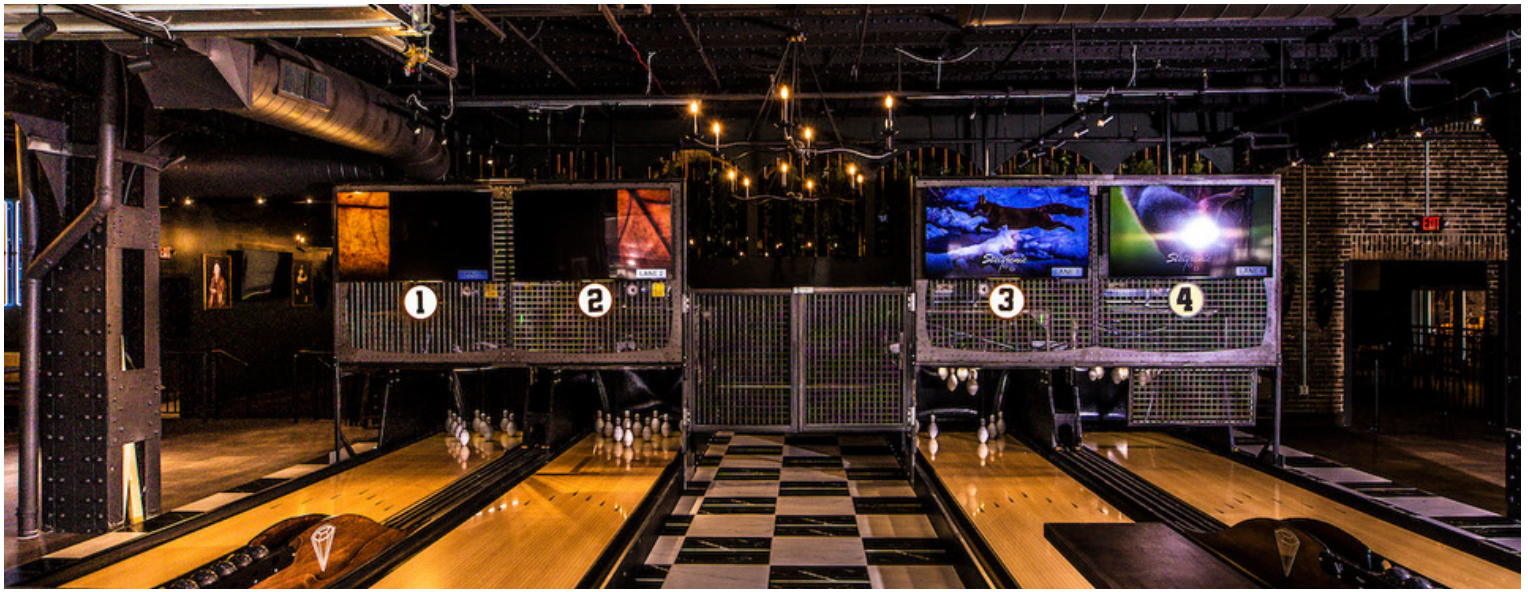
**BAR OFFERINGS: CALL LEVEL LIQUOR AND THE MOST BEERS ON DRAFT IN-HOUSE  
TVS: 5 TVS (3 TVS W/ CABLE AND HDMI HOOKUP - 2 TVS W/ HDMI HOOKUP ONLY)  
ADDITIONAL AV: 6 DUCKPIN BOWLING LANES**

### **OUTDOOR PATIO:**

**MAX CAPACITY- STANDING ROOM: 40**

**MAX CAPACITY- SEATED/ BANQUET: 24 OUTDOOR SEATS  
# OF BARS: N/A  
BAR OFFERINGS: N/A**





## **NEVERMORE'S SPEAKEASY**

**SUN-THU: \$50 PER HOUR - \$160 FOR 4 HOUR BLOCK  
FRI-SAT: \$125 PER HOUR - \$400 FOR 4 HOUR BLOCK**

**WHILE PROHIBITION HAS LONG SINCE DISAPPEARED, THE THRILL AND EXCITEMENT OF A TRULY PRIVATE AND SECRET SPOT TO IMBIBE STILL LIVES ON TO THIS DAY. TUCKED AWAY IN THE CENTER OF UNION STATION LIES INDY'S BEST KEPT SECRET- THE SPEAKEASY LOUNGE. GRAB A DRINK FROM OUR INCONSPICUOUS BAR, MADE FROM ONE OF THE ORIGINAL WALLS OF THE FIRST POST OFFICE OF INDIANAPOLIS OR HOST A DINNER PARTY IN A SPACE THAT WAS ORIGINALLY PART OF THE UNDERGROUND RAILROAD. EXPERIENCE A PART OF INDIANA HISTORY AT YOUR NEXT PRIVATE EVENT!**

**MAX CAPACITY- STANDING ROOM: 35  
MAX CAPACITY- SEATED/ BANQUET: 20  
# OF BARS: 1  
BAR OFFERINGS: CALL LEVEL LIQUOR  
TVS: 1 TV W/ HDMI HOOKUP ONLY  
ADDITIONAL AV: N/A**

## **ROOFTOP TERRACE:**

**SUN-THU: \$150 PER HOUR - \$375 FOR 4 HOUR BLOCK  
FRI-SAT: \$375 PER HOUR - \$1200 FOR 4 HOUR BLOCK**

**TAKE A GLIMPSE OF THE CIRCLE, RARELY CAPTURED BY MANY HOOSIERS FROM OUR ROOFTOP TERRACE. ENJOY THE AMAZING VIEWS OF THE URBAN JUNGLE, WHILE GETTING A HANDCRAFTED COCKTAIL AND APPETIZERS FROM OUR SCRATCH KITCHEN. THIS VENUE HAS GREAT FUNCTIONALITY FOR WEDDING CEREMONIES, LIVE MUSIC, OR LOCAL VENDOR'S MARKETS.**

**MAX CAPACITY- STANDING ROOM: 200  
MAX CAPACITY- SEATED/ BANQUET: 150  
# OF BARS: 1  
BAR OFFERINGS: LIMITED CALL LEVEL LIQUOR  
TVS: N/A**



## RENTAL SPECIALS:

**\$20 UNLIMITED BOWLING PER HOUR PER LANE**

**\*SPECIAL RATES FOR BOOKING BEFORE 10/31- WEEKDAY RATES FOR WEEKEND DATES!\***

**\*STARTING NOV 1ST- HOLIDAY SPECIALS!!\***

**-PICK ANY 3 CLASSIC OR CRISPY BITES FOR \$15 P.P. FOR EVENTS THROUGH 12/31**

**-20% TOTAL BEVERAGE PACKAGES FOR EVENTS THROUGH 12/31**

**-DRINK SPECIALS OFFERED ALL MONTH LONG**

