



# SANTA YNEZ INN

RELAXED LUXURY



WEDDINGS OVERVIEW



## "I DO'S" IN THE HEART OF THE BREATHTAKING SANTA BARBARA WINE COUNTRY

---

### LOCATION. LOCATION. LOCATION.

Don't settle for the conventional venue; plan your wedding at Santa Ynez Inn and share an unforgettable experience surrounded by your loved ones. The inn is nestled in the heart of the breathtaking Santa Barbara Wine County, which is a scenic two hour trip from Los Angeles or a short 40 minute drive from the local Santa Barbara Airport.

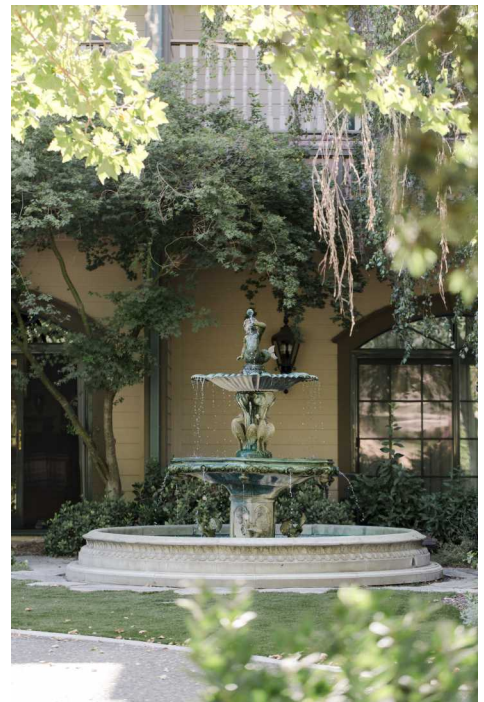
As a boutique, 20-room property, guests can enjoy the exclusivity of a private estate with all the amenities of a luxury hotel. Additionally, our 5000 square feet of dynamic indoor and outdoor space allows us to create a bespoke experience for you and your guests.

*Photo credit: Ben Malkin*

## LUXURY INSIDE & OUT

Starting with the lush garden down to the details within, Santa Ynez Inn features opulent touches throughout. Upon arriving, guests can find our garden area complete with brick firepits and fireplace, a serene fountain, fragrant rose bushes, as well as romantic twinkle lights, making it the perfect place to relax with wine and enjoy the valley's year-round temperate climate.

Designed after a historic, turn-of-the-century inn, the interior is comprised of well-appointed guestrooms in addition to a welcoming parlour, library, and spa. These spaces feature elements that emphasize the property's luxurious ambiance: sparkling chandeliers, grand fireplaces, high ceilings, and curated arts and antiques.





## WE HAVE IT COVERED

Our atmosphere of understated luxury coupled with warm hospitality makes Santa Ynez Inn the perfect destination for you and your wedding guests. We offer six spacious room types and a variety of amenities to accommodate any need during your stay - from the essentials like high-speed wifi, to the indulgent, such as in-room jetted tubs and fireplaces. For post-reception relaxation, we also have an on-site spa, sauna, and outdoor hot tub.

### THE STANDARD

Each guestroom includes the following amenities -

Plush bedding and sheets	Mini fridge with bottled water	Jetted tub
Velvet lounge seating	Keurig coffee maker and tea	In-room safe
Luxury bath products	HDTVs	Clock with phone charger
Spa robes	High-speed wifi	

*\*Additional amenities vary by room type. Some standard amenities vary for Garden ADA King.*

# THE BIG DAY



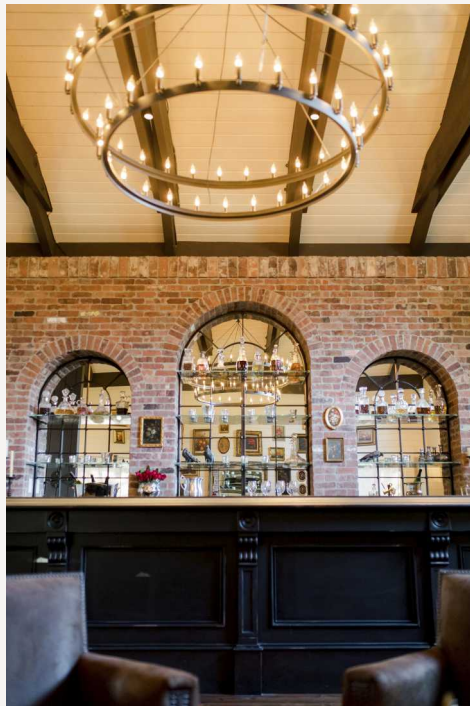
THE BEGINNING OF YOUR HAPPILY EVER AFTER

---

## MEET OUR COACH HOUSE

When it comes to selecting the right venue for your event, we offer everything but the conventional. Our 2000 square-foot Coach House serves as the ideal location for an indoor reception. It features a stunning bar with exposed brick, ideal for cocktail hour, in addition to an expansive dining room which can host a variety of seating arrangements. The large barn doors open up to a spacious back patio with romantic twinkle lights that can set the scene for a dance floor or added seating for dinner.







## YEAR-ROUND SUNSHINE

Our beautiful lawn and lush garden is located directly in front of the inn and provides the perfect backdrop for your “I do’s”. This versatile space can also be used for cocktail hour or an alfresco reception during warmer evenings. Your guests can enjoy dining and dancing under the stars or cozying up to the fire pits while sipping wine.

*Use of this area requires a full buyout; the entire inn must be reserved for the event, including all 20 guestrooms.*



# DETAILS

## Venue Capacity

Up to 140 guests depending on set-up and layout

## What's Included

Use of Coach House featuring a stunning exposed-brick bar and paved back patio with twinkle lights and fire pits.

With a full buyout, you'll also have use of our lush Garden featuring a spacious lawn area and fire pits.

Staffing for event

Set-up, break-down, and clean up

Tables and white linens

White folding ceremony chairs

Wood cross-back reception chairs

Dinnerware, glassware, barware, and flatware

Newly renovated bathrooms

*Group is responsible for everything else  
not listed above.*

## Site Fee

\$10,000

## Additional Terms and Conditions

Planner, day-of coordinator, and event insurance is required for all wedding events.

Events may be held only until 10:00 pm due to a city noise ordinance.

Pricing is subject to change without notice unless specified in signed contract.

Pricing is subject to 22% service charge and applicable city and state taxes.

