

# DONALDSON BROWN

## *Riverfront Event Center*

*Easy to reach, hard to leave behind*



## *Wedding Brochure*

With picturesque riverfront views 200 feet above the Susquehanna River, Donaldson Brown Riverfront Event Center is the ideal location for those seeking to add grandeur to their big day. From fairytale weddings to flawless events, the estate provides an elegant setting in Port Deposit, Md. Donaldson Brown will leave a lasting impression.

# DONALDSON BROWN

## *Riverfront Event Center*

In an easy-to-reach location just minutes from Interstate 95, the Donaldson Brown Riverfront Event Center is located in the northern tip of Maryland, near Port Deposit, in Cecil County. It is easily accessible from several surrounding states. And once there, it is hard to leave behind.

### *The Mansion*

Guests will enjoy the beautiful architecture of the mansion. From floor-to-ceiling windows, ornate moldings, original fixtures, elegant spiral stairways, arched doorways, antique chandeliers, and numerous beautiful entryways, the mansion resonates elegance. Those celebrating their vows can hold a tented reception on the property's lawn, or a smaller affair can be held inside the manor banquet room.

### *Overnight Accommodations*

For those staying the night, there are 17 exquisitely decorated rooms, featuring period furniture and modern amenities. Each room offers top-quality Hilton mattresses and premium bedding for comfort and elegance. For groups needing more than the 25 beds in the mansion, the Carriage House offers nine additional rooms.

### *The Estate*

The scenic grounds of the estate include manicured lawns, beautiful gardens, an enormous greenhouse, the original carriage house, a sprawling fountain flanked by architectural ponds (with plans to be refurbished to its original working condition in 2022), and a panoramic view of the Susquehanna with tree-lined banks. The property offers opportunities for a variety of lawn games, a large tent, ceremony area, and a stunning backdrop for portraits.

### *The Staff*

Couples can celebrate in the lap of luxury, taken care of by the manor's attentive staff. With a full-time chef utilizing recipes of old along with a mix of new favorites, the staff can create a menu for any palate. They can provide catering for events up to 50 guests, and welcome outside vendors for larger gatherings. The management is happy to recommend some of the area's best wedding professionals.

# DONALDSON BROWN

## *Riverfront Event Center*

### *History*

The former estate of renowned industrialist and DuPont executive Frank Donaldson Brown and his wife, the former Greta DuPont Barksdale, this stunning manor has presided over the Susquehanna River since 1939. The mansion's red-brick façade is a perfect example of the Georgian-Revival style popular at the time. One of Maryland's most iconic houses, it was bequeathed to the University of Maryland in the 1960s.

### *Tours*

Wedding site tours are complementary and available by request. Historic tours are also available for those who would enjoy learning about classic architecture and the DuPont family. These tours incur a fee and are by appointment only.





# DONALDSON BROWN

## *Riverfront Event Center*

# *The Perfect Wedding*

## BEFORE THE EVENT

### *The Donaldson Suite*

The perfect place for wedding preparations, Frank and Greta's suite measures 27 feet by 22 feet. It features a classic dressing area off the main room with multiple mirrored areas and closet space for formal attire. The master bath is astounding in size and space. The room also features an antique writing desk, a sitting area, and a fireplace flanked by crystal beaded sconces.



### *The Frog & Bark Suite*

Relax and prepare for the big moment in the room that once belonged to the Browns' two eldest sons. This spacious room features views of the Susquehanna River from six large windows and measures 24 feet by 23 feet.



# DONALDSON BROWN

## *Riverfront Event Center*

### DURING THE EVENT

#### *The View*

Guests can gaze down upon the waterfront town of Port Deposit or the bridge in the distance and take in an unparalleled view of the Susquehanna River.



#### *Tented Areas*

Situated on 23 acres, Donaldson Brown offers endless options for tent placement.





# DONALDSON BROWN

## *Riverfront Event Center*

### DURING THE EVENT

#### *Cocktails*

The Georgian mansion offers multiple rooms to spread out your cocktail areas: the classic wood-paneled Chesapeake Room, the game room, the entrance area, the library, the Susquehanna Room, the breakfast room with hand-painted wallpaper, or even outdoors on the lawn. The options are limitless. The bar area in the South Sunroom comes equipped with an ice maker, large refrigerator, multiple shelves, and sink to meet your bartender's needs.



# DONALDSON BROWN

## *Riverfront Event Center*

### AFTER THE EVENT

#### *Historic Accommodations*

The mansion boasts seven spacious suites with private baths. Each suite belonged to a member of the Brown family in the 1930s, with two offering impressive dressing rooms featuring original cabinetry. Each suite has unique moldings and period furniture with views overlooking the river or the lawns. All of the 17 bedrooms have recently been upgraded with high-quality Hilton mattresses and luxury linens for premium comfort. Additionally, there are nine bedrooms with shared baths for private groups. If more sleeping arrangements are needed, there are nine rooms available in the Carriage House.



#### *Breakfast*

Allow our chef to spoil your group with classic breakfast options such as a waffle bar, scrambled eggs, French toast casserole, or spinach/sausage quiche. The staff will work closely with you to define a menu that will amaze your overnight guests.





DONALDSON BROWN  
*Riverfront Event Center*

## Wedding Packages

### *Pineapple Wedding Package - \$6,000*

Accommodates up to 50 people; rental of first floor of mansion and access to the 23-acre grounds (tent and outdoor seating and catering not included).

*This package includes:*

- 1 hour on estate for engagement photos
- 2-hour rehearsal
- 5-hour wedding
- Spacious dressing rooms for wedding party
- Game room
- Banquet room
- Breakfast room
- Entertainment room for dancing
- Multiple sitting rooms
- The Chesapeake Room and The Susquehanna Room
- Two sweeping staircases for classic indoor photos

*Catering available. Please inquire for pricing. Overnight accommodations are available at an extra charge.*

### *Port Deposit Wedding Package - \$6,000*

This package accommodates weddings of any size when our discerning clients coordinate all of their own rentals (such as tables, chairs, and tent), as well as catering.

*This package includes:*

- 1 hour on estate for engagement photos
- 2-hour rehearsal
- 5-hour wedding
- Spacious dressing rooms for wedding party
- Game room
- Banquet room
- Breakfast room
- Entertainment room for dancing
- Multiple sitting rooms
- The Chesapeake Room and The Susquehanna Room
- Two sweeping staircases for classic indoor photos

*All pricing is subject to change.*



DONALDSON BROWN  
*Riverfront Event Center*

## Wedding Packages

### *Susquehanna Wedding Package - \$10,700*

Accommodates up to 150 people; rental of first floor of mansion and access to the 23-acre grounds

*This package includes:*

- 1 hour on estate for engagement photos
- 2-hour rehearsal
- 5-hour wedding
- Spacious dressing rooms for wedding party
- Game room
- Banquet room
- Breakfast room
- Entertainment room for dancing
- Multiple sitting rooms
- The Chesapeake Room and The Susquehanna Room
- Two sweeping staircases for classic indoor photos
- White wedding tent along the Susquehanna with 360-degree views
- Reception area: white tables and chairs for 150 guests
- Romantic bistro lighting in the tented area
- Outdoor dance floor

*\*Larger parties can be accommodated. Additional costs will be calculated based upon the number of guests.*

*This package does not include catering. However, staff is happy to suggest catering options. Caterers must be licensed and insured.*

### *Susquehanna Wedding Package with Overnight - \$12,400*

Accommodates up to 150 people; rental of mansion and access to the 23-acre grounds

*This package includes:*

- 1 hour on estate for engagement photos
- 2-hour rehearsal
- 5-hour wedding
- Spacious dressing rooms for wedding party
- Game room
- Banquet room
- Breakfast room
- Entertainment room for dancing
- Multiple sitting rooms
- The Chesapeake Room and The Susquehanna Room
- Two sweeping staircases for classic indoor photos
- White wedding tent along the Susquehanna with 360-degree views
- Reception area: white chairs for 150 guests
- Romantic bistro lighting in the tented area
- Outdoor dance floor
- Overnight accommodations in our seven suites for 14 guests – additional rooms available
- Breakfast for overnight guests
- Checkout at 11 a.m.

*\*Larger parties can be accommodated. Additional costs will be calculated based upon the number of guests.*

*This package does not include catering. However, staff is happy to suggest catering options. Caterers must be licensed and insured.*

*All pricing is subject to change.*

DONALDSON BROWN  
*Riverfront Event Center*

## Wedding Packages

### *Full Weekend Wedding Package - \$15,000*

Friday evening through Sunday morning.

Accommodates up to 150 people; rental of mansion and access to the 23-acre grounds

*This package includes:*

- 1 hour on estate for engagement photos
- 2-hour rehearsal
- 5-hour wedding
- Spacious dressing rooms for wedding party
- Game room
- Banquet room
- Breakfast room
- Entertainment room for dancing
- Multiple sitting rooms
- The Chesapeake Room and The Susquehanna Room
- Two sweeping staircases for classic indoor photos
- White wedding tent along the Susquehanna with 360-degree views
- Reception area: white chairs for 150 guests
- Romantic bistro lighting in the tented area
- Outdoor dance floor
- Overnight accommodations in our seven suites for 14 guests – additional rooms available
- Breakfast for overnight guests
- Checkout at 11 a.m. on Sunday

*\*Larger parties can be accommodated. Additional costs will be calculated based upon the number of guests.*

*This package does not include catering. However, staff is happy to suggest catering options. Caterers must be licensed and insured.*

*All pricing is subject to change.*



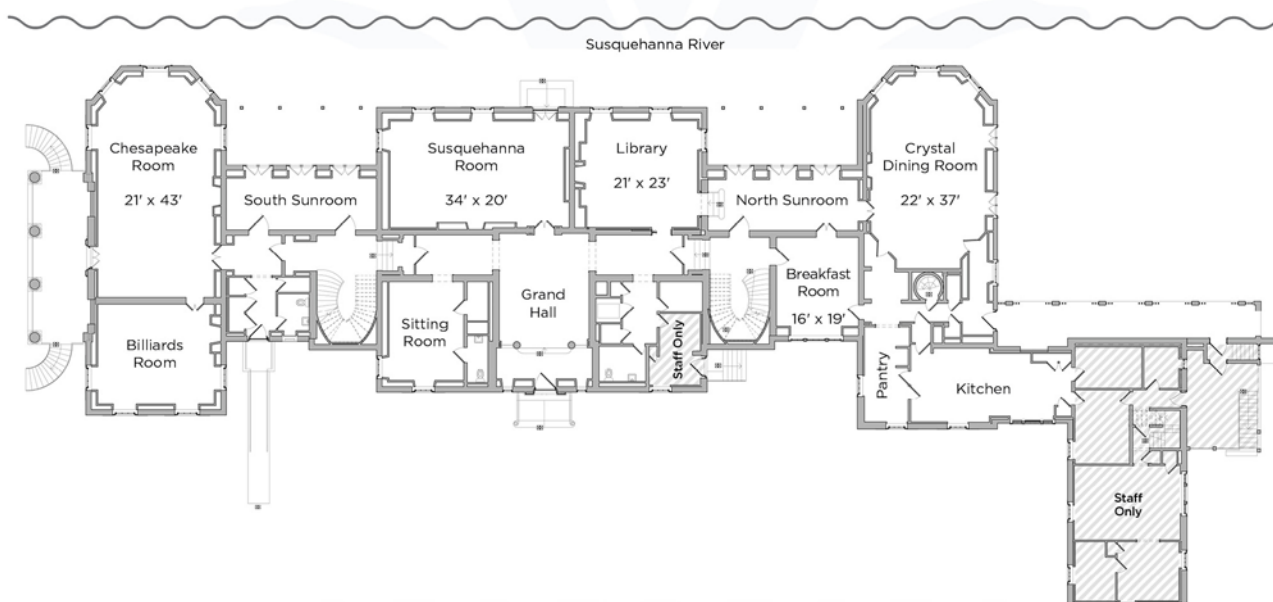


# DONALDSON BROWN

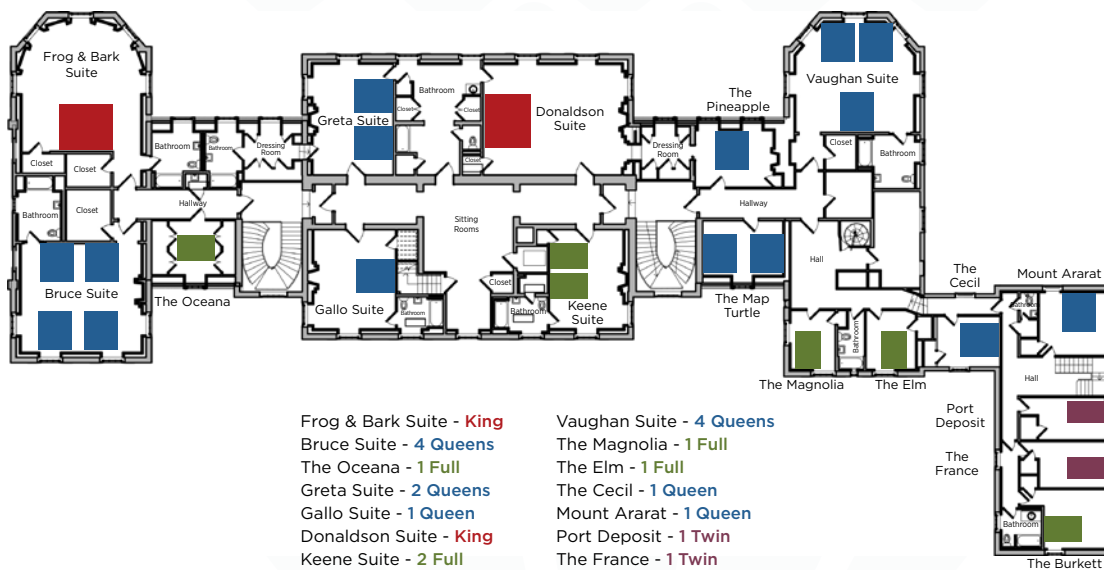
## *Riverfront Event Center*

### Room Layout

#### FIRST FLOOR



#### SECOND FLOOR



Frog & Bark Suite - **King**  
 Bruce Suite - **4 Queens**  
 The Oceana - **1 Full**  
 Greta Suite - **2 Queens**  
 Gallo Suite - **1 Queen**  
 Donaldson Suite - **King**  
 Keene Suite - **2 Full**  
 Pineapple - **1 Queen**  
 The Map Turtle - **2 Queens**

Vaughan Suite - **4 Queens**  
 The Magnolia - **1 Full**  
 The Elm - **1 Full**  
 The Cecil - **1 Queen**  
 Mount Ararat - **1 Queen**  
 Port Deposit - **1 Twin**  
 The France - **1 Twin**  
 The Burkett - **1 Full**

# DONALDSON BROWN

---

## *Riverfront Event Center*

200 Mount Ararat Farm Road  
Port Deposit, MD 21904

*Our staff is always willing to help you find the perfect wedding options.*



410-378-2555



DonaldsonBrown@umaryland.edu



DonaldsonBrown.com



DonaldsonBrownRiverFront



donaldsonbrowncenter



UNIVERSITY  
of MARYLAND  
BALTIMORE