



Fairmont

DALLAS

Congratulations on your Engagement!

Thank you for considering the iconic Fairmont Dallas for your wedding celebration!

Please take a moment to review the marvelous options & time honored traditions that we offer here. Events at The Fairmont Dallas come to life in bright, vibrant venues with a professional, experienced event planning staff that will attend to every need throughout the event. And when your event adjourns, we are at the center of all the cultural activities and exciting nightlife of Dallas.

Over 70,000 square feet of flexible venues in 25 rooms of varying size with 70 percent of the individually-designed event rooms flooded with natural light from floor-to-ceiling windows.

The entire team at The Fairmont Dallas looks forward to welcoming you're your guests to our hotel where we have been turning moments into memories in downtown Dallas for over 50 years.

If you have any questions or would like any further information please do not hesitate to ask.

Kind Regards,

The Fairmont Dallas Catering Team



Fairmont

DALLAS



THE FOREVER PACKAGE

(Luncheon Service, must conclude by 3:00 PM)

— Cocktail Reception —

Selection of Two Butler-Passed Canapes

One Hour Beer & House Wine Package

Non-Alcoholic Beverages

Butler-Passed Sparkling Wine

— Lunch Service —

Three-Course Meal Including Soup or Salad Course

Entree Course: Chicken, Fish, or Beef Selections (pre-selection required)

Plated Dessert

Coffee, Decaffeinated Coffee, and Assorted Lot 35 Teas

Tableside Fairmont Red & White Wine Service

(2 hour maximum)

Sparkling Wine Toast

Pre-Selected Entrée: \$99.00 per person

Food and beverage charges are subject to 25% service
and 8.25% tax.





Fairmont

DALLAS

SAY "I DO" AT THE FAIRMONT PACKAGE

— Cocktail Reception —

Four Tray-Passed Canapes per Person during Cocktail Reception

One Hour of Premium Bar during Cocktail Reception

Butler-Passed Sparkling Wine

— Dinner Service —

Three-Course Meal Including Soup or Salad Course , Intermezzo

Entree Course: Chicken, Fish, or Beef Selections (pre-selection required)

Plated Dessert

Tablesides Fairmont Red & White Wine Service (2 hour maximum)

Sparkling Wine Toast with Dinner

Three-Hour Premium Bar Available After Dinner

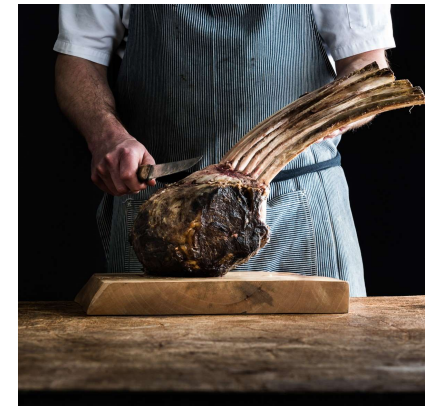
\$185.00 per person

Food and beverage charges are subject to 25% service
and 8.25% tax.

Refer to following page for Package Inclusions

[View Event Space in 360 Degrees Here](#)

[PSAV @ Fairmont Dallas](#)



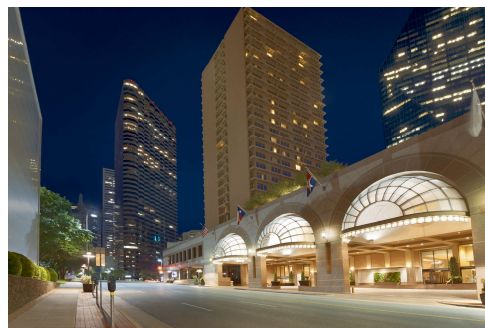
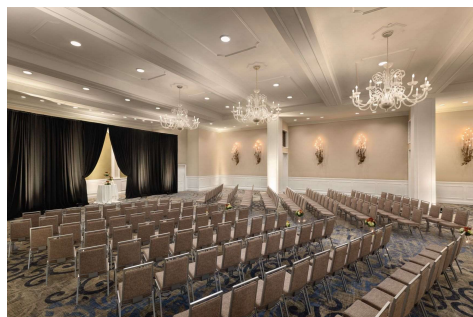
Fairmont

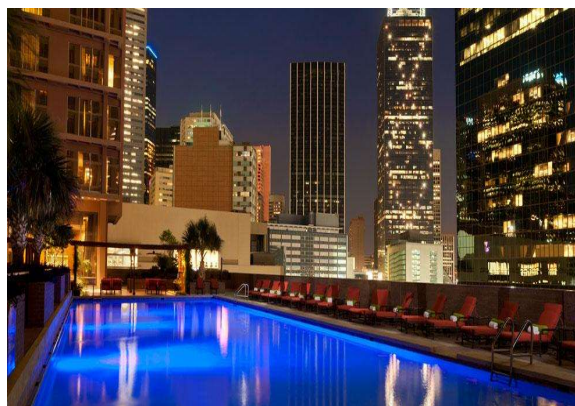
DALLAS

WEDDING PACKAGE INCLUSIONS

- ❖ Elegant banquet chairs and tables
- ❖ Floor length table cloths and napkins in your color choice of black or white
- ❖ Up to five clear votive candle holders with white tea light candles per table
- ❖ Wooden parquet dance floor and staging– available in various customizable sizes
- ❖ Signature Silverware, White China & Glassware
- ❖ Additional tables and linen for guest sign-in, place cards, cake, DJ, and more
- ❖ Complimentary Suite for two consecutive nights for the Bride & Groom or
- ❖ Complimentary Fairmont Gold Suite for two consecutive nights for the Bride & Groom*
- ❖ Newlywed Turndown Amenity
- ❖ Preferred Room Rates for Friends and Family
- ❖ Food & Wine Tasting for up to Four Guests
- ❖ Complimentary Valet Parking for Wedding Couple
- ❖ Complimentary Valet Parking for Parents of the Wedding Couple
- ❖ Complimentary One Night Stay for Wedding Couple on One Year Anniversary* (based on availability)

*Based on \$20,000 Food and Beverage Minimum





GUEST AMENITIES AND RECREATION

Outdoor, rooftop Junior Olympic-style swimming pool
 Herb & Vegetable Garden on the Terrace Level
 24-hour In-Room Dining Available
 24-hour Guest Services Concierge available
 Same-day dry cleaning and overnight shoe-polishing
 Full Gift Shop, located on the Lobby Level
 Safety deposit boxes available
 24-hour Business Center, located on the Lobby Level
 Starbucks on property, featuring Starbucks coffee, salads, sandwiches and pastries, located on the Lobby
 Fitness Center featuring high performance Technogym equipment including elliptical fitness cross trainers, free weights, stationary bikes, treadmills, and upper and lower body training stations.
 Guests may also enjoy Health Club and Spa privileges at T. Boone Pickens YMCA

Fairmont

DALLAS



TRANSPORTATION AND PARKING

The Fairmont Dallas is conveniently located 18 miles, or 30 minutes from DFW airport, and 8 miles, or 15 minutes from Love Field.

DFW One-Way estimated costs:
 Super Shuttle \$21.00, Taxi \$46.00,
 Sedan \$93.50, Uber/Lyft \$25.00

Love Field One-Way estimated costs:
 Super Shuttle \$21.00, Taxi \$24.00,
 Sedan \$93.50, Uber/Lyft \$15.00

Valet-Parking: \$ 34.00 per night, per car



PYRAMID RESTAURANT & BAR

Enjoy a sleek, contemporary ambiance in the heart of the downtown Dallas Arts District. Paired with our culinary team's award-winning Modern American cuisine, which draws inspiration from Texas growers and regional purveyors, and the results are a truly wholesome dining experience. The Pyramid Restaurant & Bar's décor evokes a sophisticated Texas glamour, with a color palette in rich earth tones with accents of polished metal and dark mahogany flooring. Organic wood sculptures decorate the room and an original artistic interpretation of a centuries-old, crosscut tree welcomes guests inside the foyer. The Pyramid Restaurant & Bar is located on-site at Fairmont Dallas.

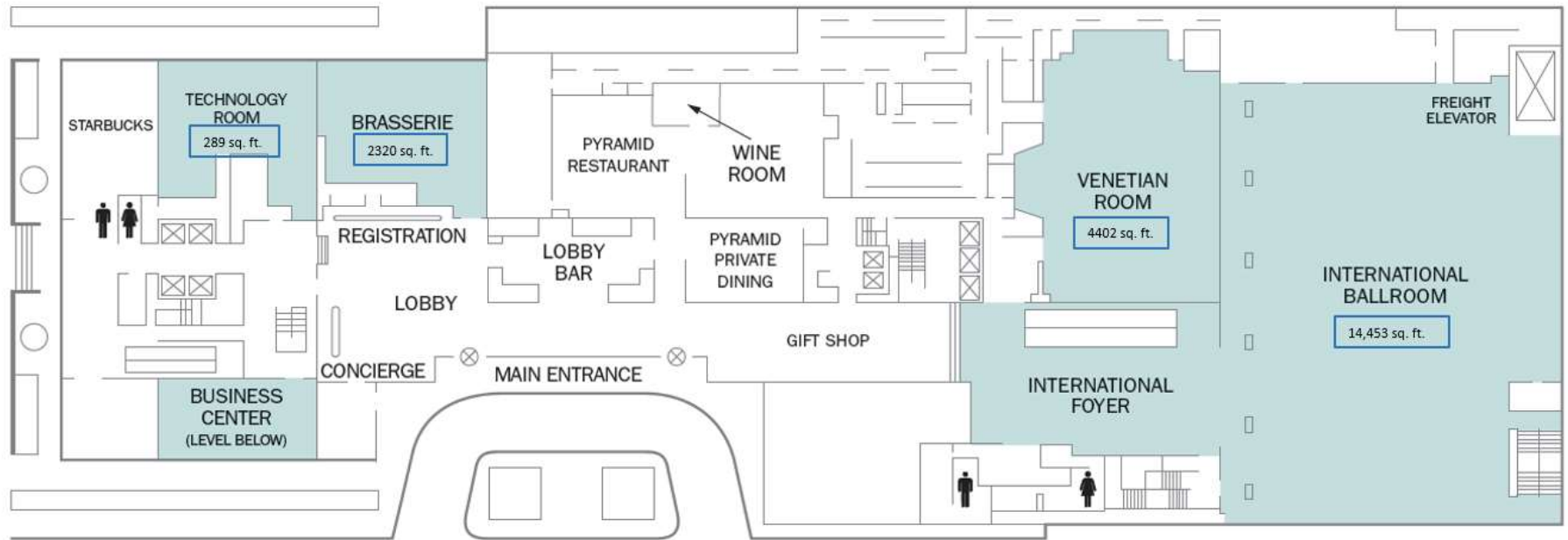
PYRAMID
 RESTAURANT & BAR



Fairmont

DALLAS

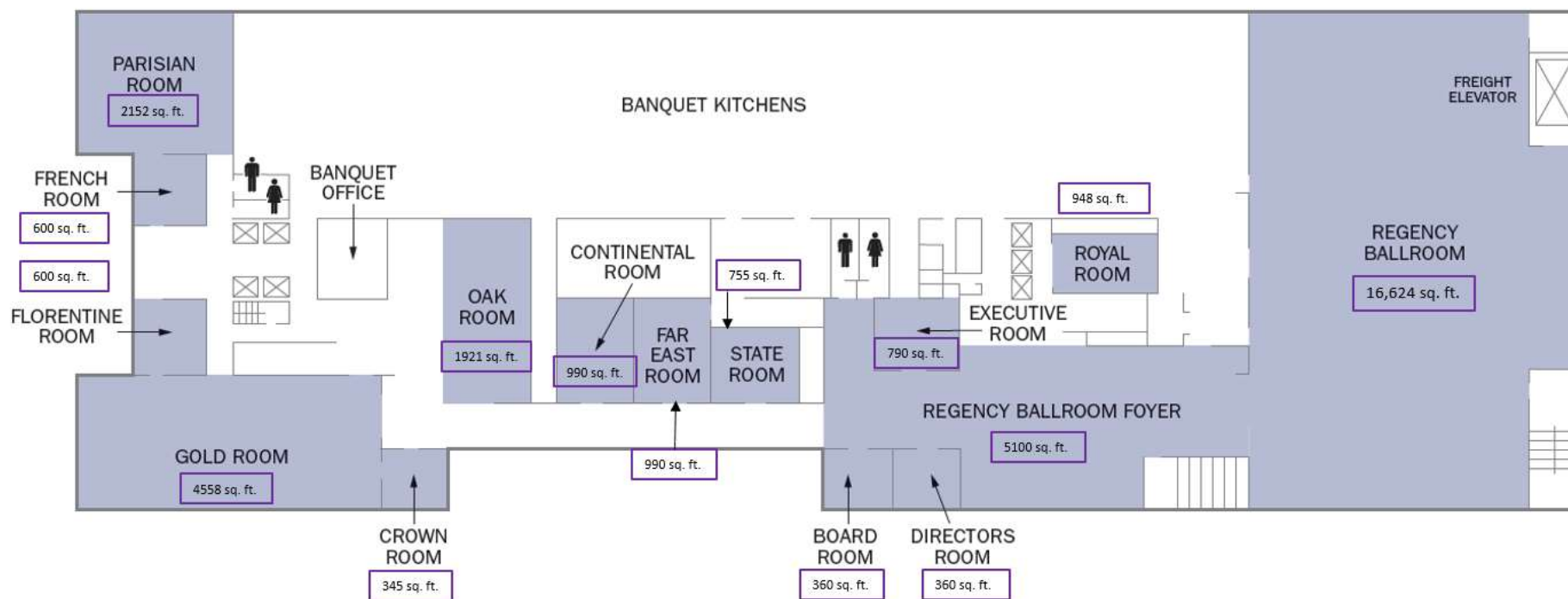
LOBBY LEVEL (1ST FLOOR)



Fairmont

DALLAS

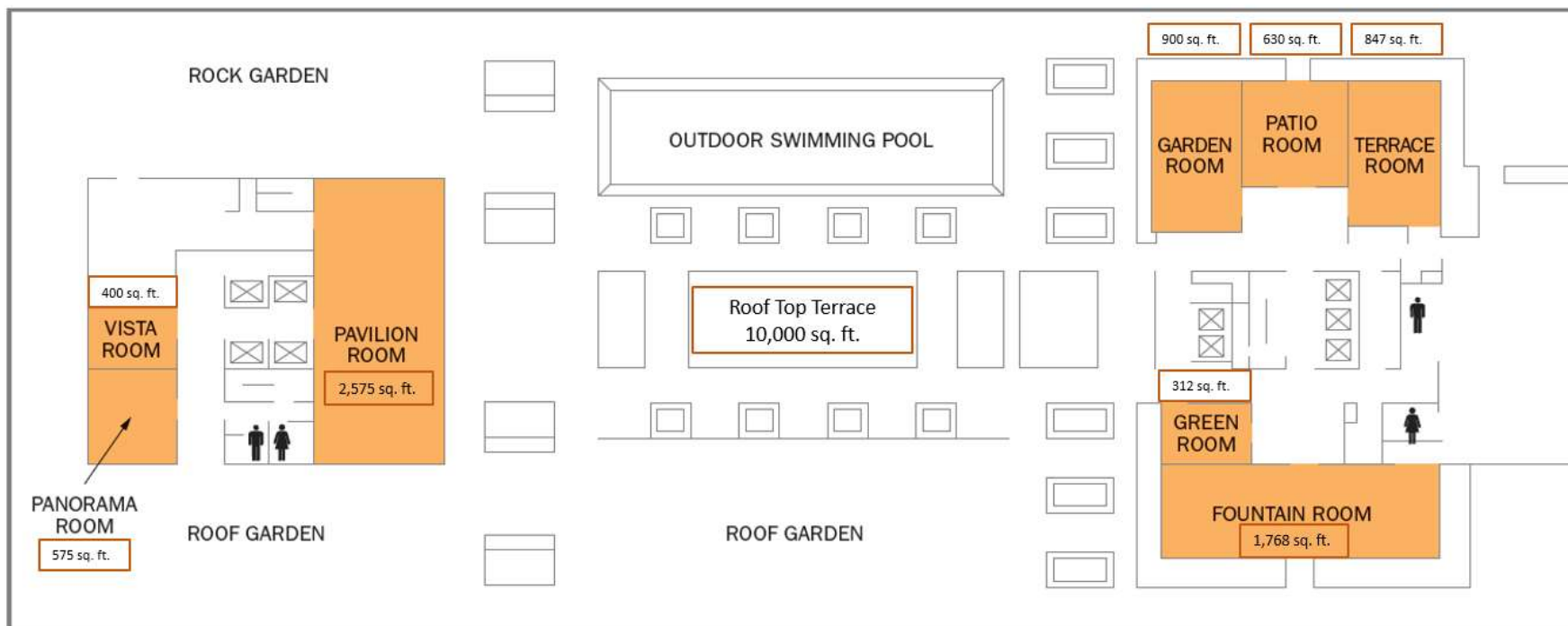
BANQUET LEVEL (2ND FLOOR)



Fairmont

DALLAS

TERRACE LEVEL (3RD FLOOR)



Lobby Level

Room Name	Dimensions	Ceiling Height	Square Feet	Reception	Banquet 60" Rounds of 10	Crescent Rounds	Theater	Classroom 6' x 18" Tables	Classroom 2/6	Conference	U-Shape	Hollow Square
International Ballroom	138' x 111'	16'	14,453	1200	800	450	1200	725	475	--	--	--
International Foyer	--	--	2,800	250	--	--	--	--	--	--	--	--
Venetian Room	86' x 54'	16'6"	4,402	350	300	150	350	150	100	--	--	--
Brasserie	58' x 40'	varies	2,320	150	100	100	80	50	30	20	15	20
Tech Room		8'4"	289							10		

Banquet Level

Room Name	Dimensions	Ceiling Height	Square Feet	Reception	Banquet 60" Rounds of 10	Crescent Rounds	Theater	Classroom 6' x 18" Tables	Classroom 2/6	Conference	U-Shape	Hollow Square
Regency Ballroom	159' x 113'	27'	16,624	2000	1400	700	2000	920	600	--	--	--
Regency Foyer	--	--	5,100	500	--		--	--	--	--	--	--
Royal Room	36' x 22'	14'	948	75	50	25	70	45	30	26	20	24
Directors Room	22' x 16'	14'	360	15	20	12	20	12	8	12	--	12
Board Room	22' x 16'	14'	360	15	20	12	20	12	8	12	--	12
Executive Room	32' x 25'	12'	790	65	50	25	60	35	24	22	20	24
State Room	28' x 26'	14'	755	65	50	25	70	40	26	22	20	24
Far East Room	36' x 27'	14'	990	90	80	40	100	50	36	24	30	36
Continental Room	36' x 27'	14'	990	90	80	40	100	50	36	24	30	36
Oak Room	61' x 32'	13'	1,921	180	140	70	180	110	76	--	40	50
Crown Room	22' x 16'	14'	345	15	20	12	20	12	8	12	--	12
Gold Room	106' x 42'	14'	4,558	400	320	160	380	225	150	--	45	50
Florentine Room	25' x 23'	14'	600	50	40	20	40	20	10	20	16	20
French Room	25' x 24'	14'	600	50	40	20	40	20	10	20	16	20
Parisian Room	51' x 42'	14'	2,152	200	160	80	220	110	80	--	42	50

Terrace Level – North Tower

Room Name	Dimensions	Ceiling Height	Square Feet	Reception	Banquet 60" Rounds of 10	Crescent Rounds	Theater	Classroom 6' x 18" Tables	Classroom 2/6	Conference	U-Shape	Hollow Square
Garden Room	42' x 22'	14'	900	75	50	30	60	40	30	26	20	30
Patio Room	28' x 22'	14'	630	40	40	20	50	30	20	20	15	20
Terrace Room	38' x 22'	14'	847	70	50	30	60	40	30	26	20	30
Green Room	24' x 14'	14'	312	15	20	10	25	12	8	16	--	16
Fountain Room	68' x 26'	14'	1,768	150	100	60	150	80	60	--	30	40

Terrace Level – South Tower

Room Name	Dimensions	Ceiling Height	Square Feet	Reception	Banquet 60" Rounds of 10	Crescent Rounds	Theater	Classroom 6' x 18" Tables	Classroom 2/6	Conference	U-Shape	Hollow Square
Vista Room	21' x 19'	14'	400	40	30	10	20	15	10	16	12	16
Panorama Room	25' x 22'	14'	575	40	40	20	45	30	20	20	15	20
Pavilion Room	77' x 34'	14'	2,575	200	160	80	200	100	70	--	40	50