

A scenic view of a tree-lined driveway in Litchfield Hills, Connecticut. The driveway is paved and lined with large, mature trees on both sides. A white vintage car is driving away from the viewer on the right side of the road. In the background, there is a stone wall, a white fence, and a building. The overall atmosphere is peaceful and elegant.

WF

LITCHFIELD HILLS
CONNECTICUT

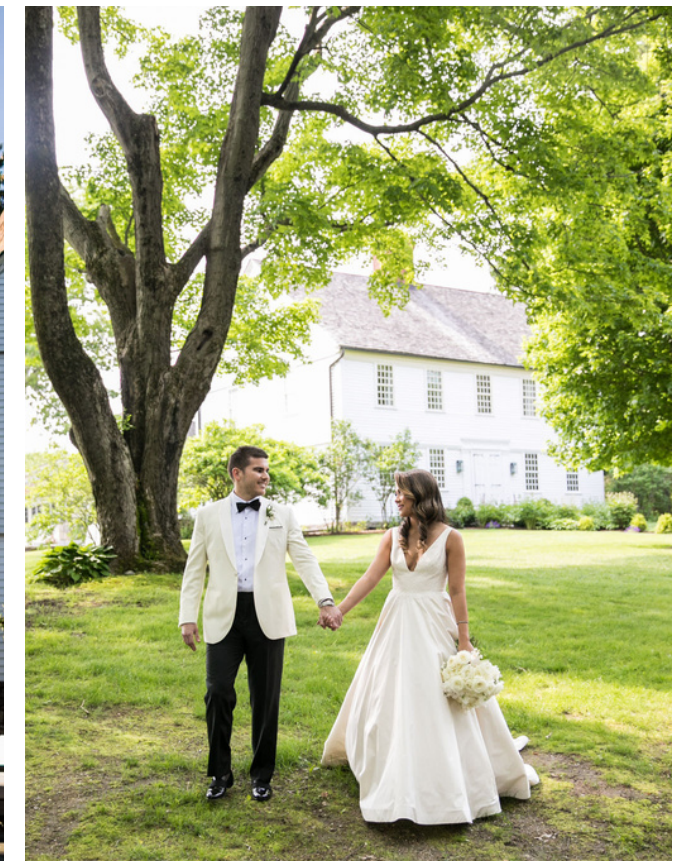
2024 WEDDING COLLECTION



A ONCE IN A LIFETIME CELEBRATION FOR A ONCE IN A LIFETIME LOVE....

A Winvian Farm wedding is love at first sight. An uncommon celebration for an uncommon love. Winvian Farm's historic 113-acre New England estate of rolling lawns, stone walls, wildflower meadows and enchanted woodlands is the ideal venue for a single charmed day or a weekend of unfettered joy. The festivities unfold on every part of this storied estate. Celebrate in our elegant dining rooms, the award winning Spa, the Solarium, and the vast, romantic Gordon Brown House.

Winvian Farm's 18 extraordinary resort cottages and Hadley Suite can be exclusively yours. Overflow accommodations for larger weddings are conveniently located nearby. Our talented chef crafts delightfully fresh and unique seed-to-table feasts from Winvian Farm's overflowing organic gardens. Our on-site wedding planner and attentive staff will anticipate your every need, even things you might never think to ask for. The sky's the limit for the wedding of your dreams.



THE COTTAGES

All of your loved ones together during the entire event adds to the magic of a Winvian Farm Wedding Weekend. Our luxury accommodations are worlds unto themselves, nestled into the surrounding Connecticut woodlands and meadows. Nineteen unique cottages and the Hadley Suite, each with a story to tell, each a surprise, an escape, a splendid adventure.

Our style blends elegance with nature, your guests enjoy all the luxuries of our 5-diamond hotel within their own cottage (or suite) complete with steaming rain showers, feather down beds and oversized soaking tub. Each cottage impeccably furnished with silky Italian linens, luxe toiletries and daily housekeeping by our friendly staff. Winvian Farm will become your guests home away from home.

Artist	Golf	Library	Stable
Beaver Lodge	Greenhouse	Log Cabin	Stone
Camping	Hadley Suite	Maritime	Treehouse
Charter Oak	Helicopter	Music	Woodlands
CT Yankee	Industry	Secret Society	





Ceremony Venues



WEST MEADOW

Our West Meadow provides expansive views of our Charles Pond and gorgeous Litchfield Hills sunsets. Say "I do" under the open skies!

SETH BIRD MEADOW

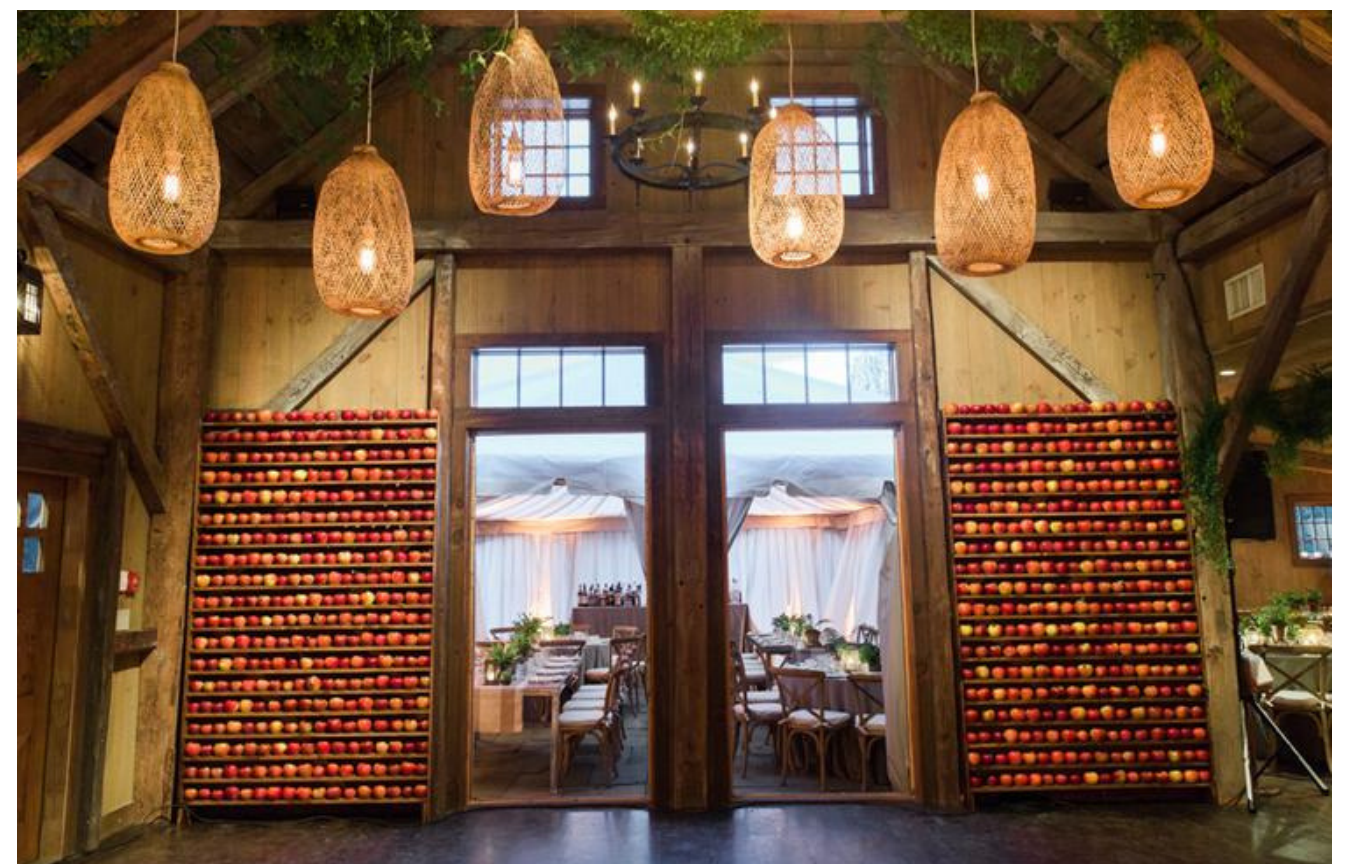
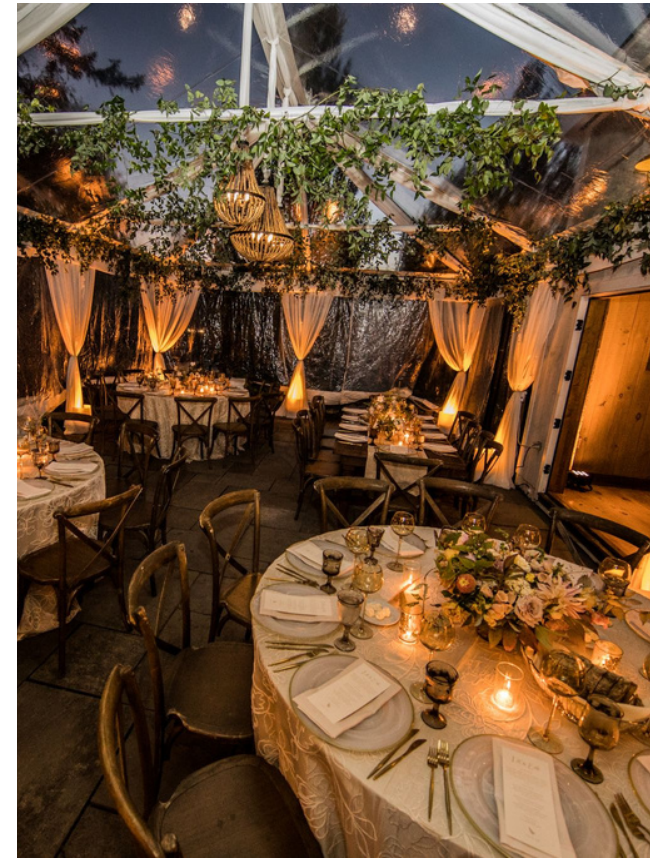
Our Seth Bird Meadow offers lush views of our apple orchard and gardens.



Reception Venue

GORDON BROWN HOUSE

Our fully restored and temperature-controlled barn is the centerpiece of the property. The barn wood walls set the backdrop for your wedding design, striking just the right balance in this beautiful historical and expansive space which can only get larger with attaching up to 2 adjacent patios. Wrought iron chandeliers hang from the ceilings, accenting your dream vision!





DRINKS & DINING

The Restaurant at Winvian Farm's is leading a culinary revolution with the unique Winvian Farm seed-to-table philosophy. The freshest, most natural non-GMO ingredients are harvested daily to create exceptional seasonal menus, for a truly luxurious fine dining experience.

Almost everything served in Winvian Farm's revered restaurant is grown on our private estate in three greenhouses, and three acres of organic gardens. Honey from our apiary, a henhouse, root cellar, and luscious fruit trees round out Winvian Farm's artfully open-ended menus. Even the dining room bouquets come from Winvian Farm's heady flower and herb beds. On the day of your wedding the food couldn't possibly be fresher!

Our skillful mixologists and educated sommeliers will serve your guests locally brewed beers, a beautifully selected wine pairing & custom created signature cocktails using the highest quality liquor and house made mixers.

Also, included is full service waitstaff, bartenders, and front of house managers along with your custom selection of tables, chairs, linens & table settings. We start with a private Wedding Menu tasting for yourself, your fiancée, plus 4 additional guests to create your wedding menu.

2014 WINVIAN WEDDING COLLECTION





ETC.....

Rentals: As each of our weddings is entirely unique, the event is fully customizable to fit your vision. We will help you craft the aesthetic of the wedding and fully assist you with all rental needs!

We estimate \$100 per person for basic rentals, although cost is dependent on the scope of the event!

Subsequent Meals: In addition to your Wedding Cuisine and Bar services for your wedding day, we'll take care of your dining needs throughout your wedding weekend!

- Barbeque Rehearsal Dinner
- 3 Course Plated Dinner
- After Party Snacks
- Buffet - Style Bridal Party Lunches
- Farewell Brunch

After Party: Not ready to call it a night? Our Tavern allows the party to go all night long until 2:00am. Whether your guests want another drink or a cup of coffee, this is a perfect way to part ways for the evening.

Celebration Space Enhancements: Sometimes the fun doesn't have to stop there...

- Stage Rental
- Photo Booth
- Drapery
- Cigar Lounge
- Vintage Truck Rental
- Off Property Shuttles

